

Area Percent Report



Agilent Technologies

Data file: E:\HPLC\data\TEST\002-P2-D3-15187016-39-23.D

Sample name: 151870

Instrument: 2DLC

Sample type: Sample

Location: P2-D3

Acq. method: F0.6 348.M

Injection: 1 of 1

Analysis method: F0.6 348.M

Injection volume: 1.200

FLOW RATE : 0.6ml/min

COLUMN : ACE C18 50*2.1 2um

COLUMN TEMPERATURE : 30

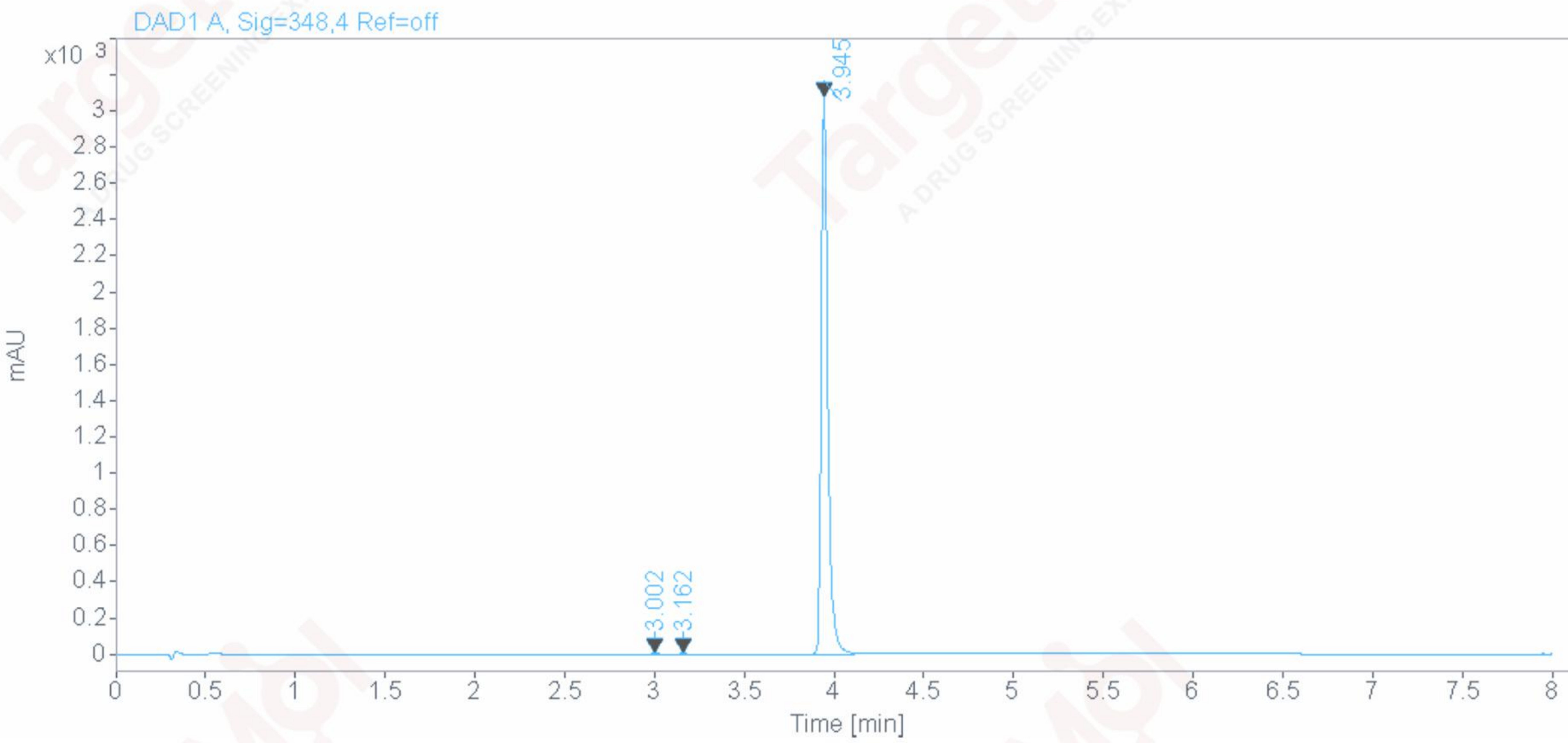
GRADIENT PROGRAM :

TIME(MIN) MOBILE PHASE-A(H2O+0.1TFA) MOBILE PHASE-B(CH3CN+0.1TFA)

0 90% 10%

6 0% 100%

8 0% 100%



Signal: DAD1 A, Sig=348,4 Ref=off

RT [min]	Type	Width [min]	Area	Height	Area%	Name
3.002	BB	0.0391	10.8341	4.3395	0.1360	
3.162	BB	0.0355	5.6489	2.5856	0.0709	
3.945	BB	0.0420	7952.3936	3089.3730	99.7932	
	Sum		7968.8766			