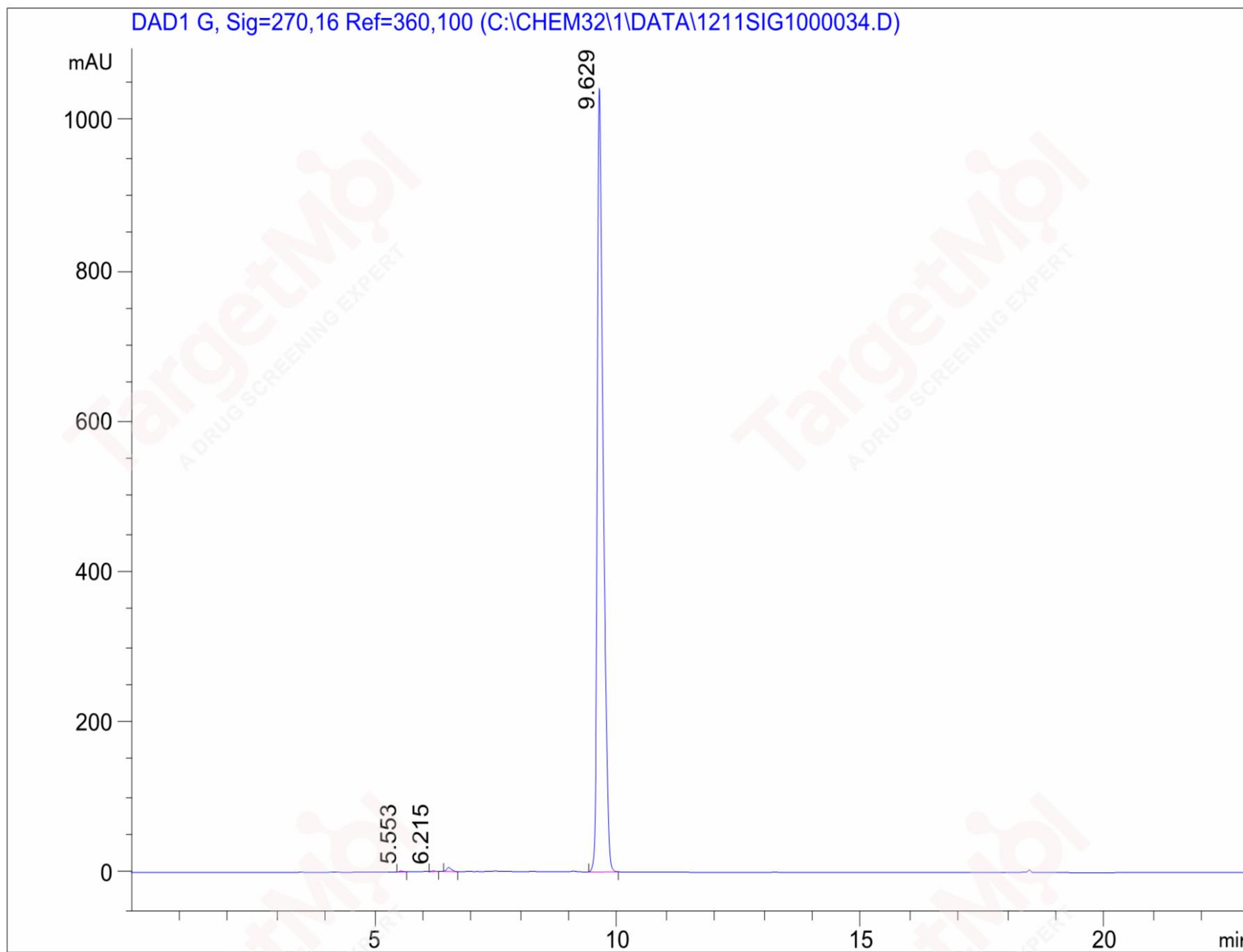


Injection Date : Tue, 8. Dec. Seq Line : 34
Sample Name : 145850 Location : Vial 29
Acq Operator : QCF Inj. No. : 1
 Inj. Vol. : 2 µl

Acq. Method : C:\CHEM32\1\DATA\1207\12-07 13-26-->
Analysis Method : C:\CHEM32\1\METHODS\0.M
Last Changed : Fri, 11. Dec. , 03:02:43 pm
 (modified after loading)



=====
Customized Report: TAOSU
=====

Sorted By Signal
Calib. Data Modified : Tue, 26. Dec. 2017,10:50:45 am
Multiplier : 1.000000
Dilution : 1.000000
Uncalibrated Peaks : not reported

Signal 1: DAD1 G, Sig=270,16 Ref=360,100

Peak	RT	Type	Width	Area	Area %	Name
#	[min]		[min]			
1	5.553	BB	0.071	4.904	0.055	
2	6.215	BB	0.077	4.338	0.049	
3	6.531	BB	0.101	37.490	0.424	
4	9.629	BB	0.124	8792.670	99.471	

=====
*** End of Report ***