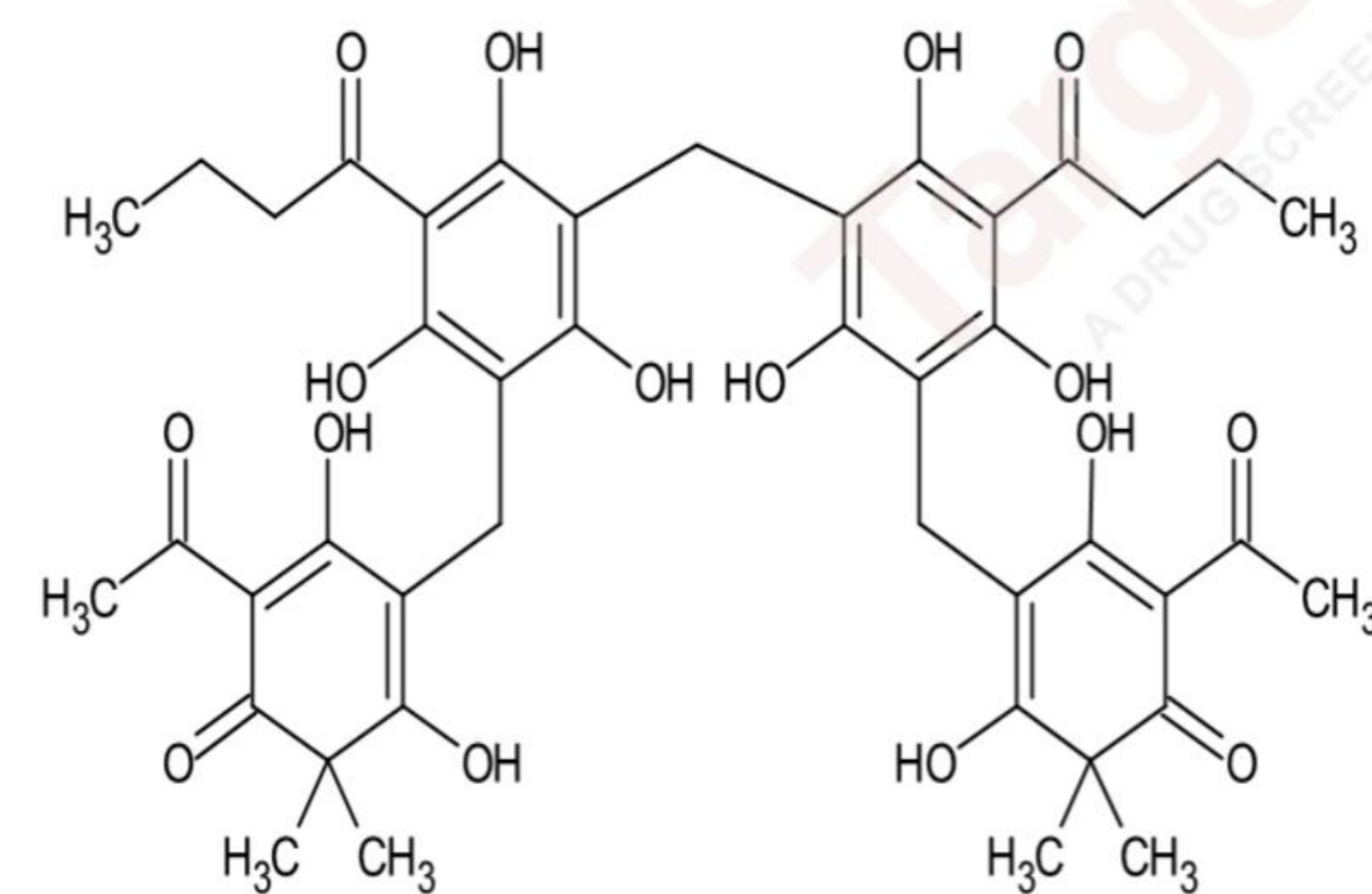


^1H NMR (400 MHz, CHLOROFORM-*d*) δ ppm 1.03 (t, $J=7.34$ Hz, 6 H) 1.34 - 1.57 (m, 12 H) 1.62 - 1.90 (m, 4 H) 2.62 - 3.22 (m, 10 H) 3.45 - 3.67 (m, 5 H) 3.86 (d, $J=11.00$ Hz, 1 H) 9.76 (d, $J=34.11$ Hz, 1 H) 10.05 - 10.34 (m, 2 H) 10.87 (br. s., 1 H) 11.65 (d, $J=16.51$ Hz, 1 H) 13.05 (br. s., 1 H)



keto-enol equilibrium

TMS

