

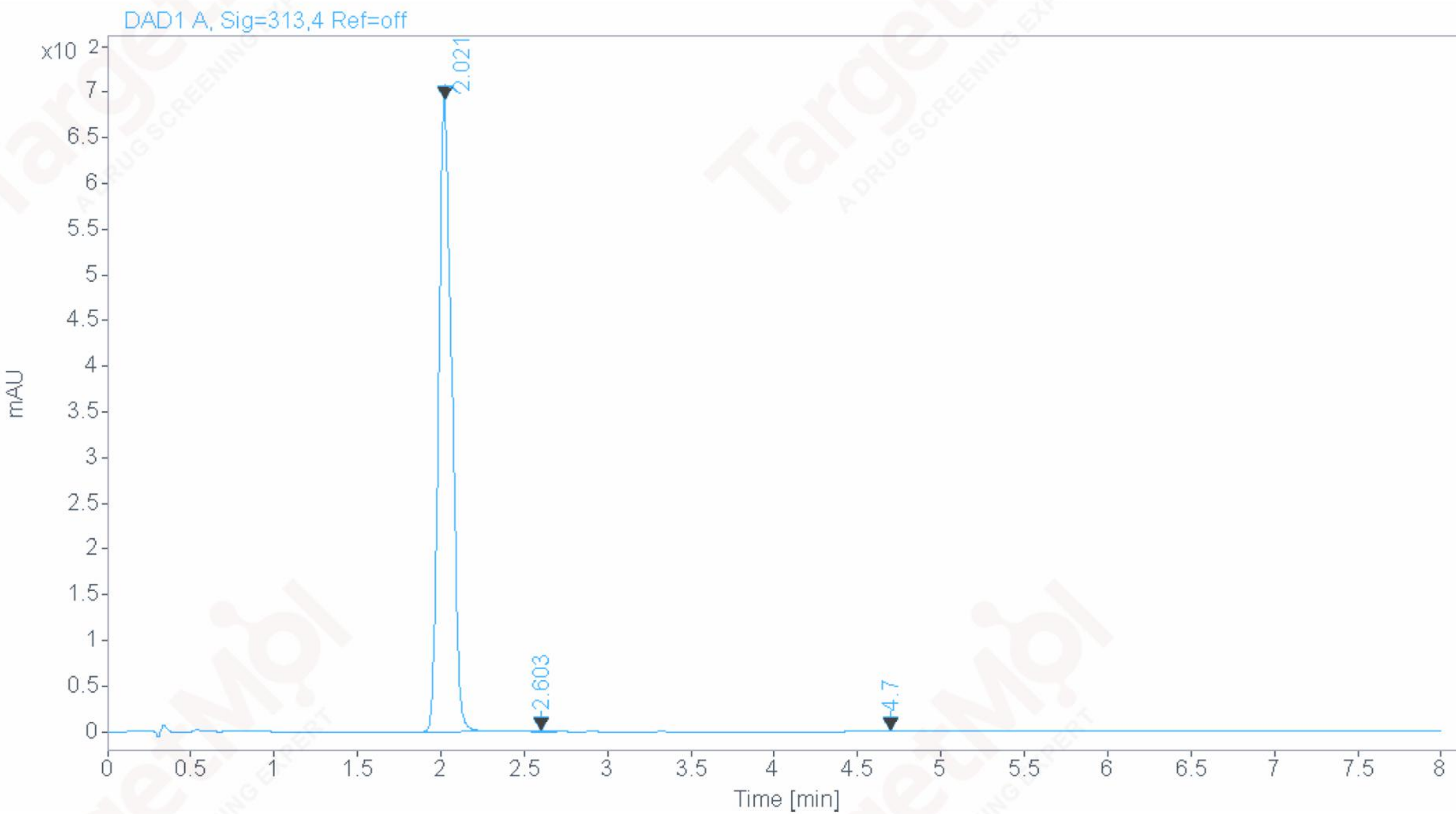
# Area Percent Report



Agilent Technologies

Data file: E:\HPLC\data\TEST\0CJK-2 0212-01-12 13-19-48\001-P1-E2-14637513-19-52.D  
Sample name: 146375  
Instrument: 2DLC  
Sample type: Sample  
Location: P1-E2  
Acq. method: F0.6 313.M  
Injection: 1 of 1  
Analysis method: F0.6 313.M  
Injection volume: 0.800

FLOW RATE : 0.6ml/min  
COLUMN : ACE C18 50\*2.1 2um  
COLUMN TEMPERATURE : 30  
GRADIENT PROGRAMME :  
TIME(MIN) MOBILE PHASE-A(H2O+NH3/FA PH=8) MOBILE PHASE-B(CH3CN++NH3/FA PH=8)  
0 90% 10%  
10 0% 100%  
12 0% 100%



Signal: DAD1 A, Sig=313,4 Ref=off

RT [min]	Type	Width [min]	Area	Height	Area%	Name
2.021	BB	0.0851	3839.0820	688.0881	99.8757	
2.603	MM	0.0978	3.2328	0.5511	0.0841	
4.700	MM	0.1076	1.5462	0.2394	0.0402	
	Sum		3843.8611			