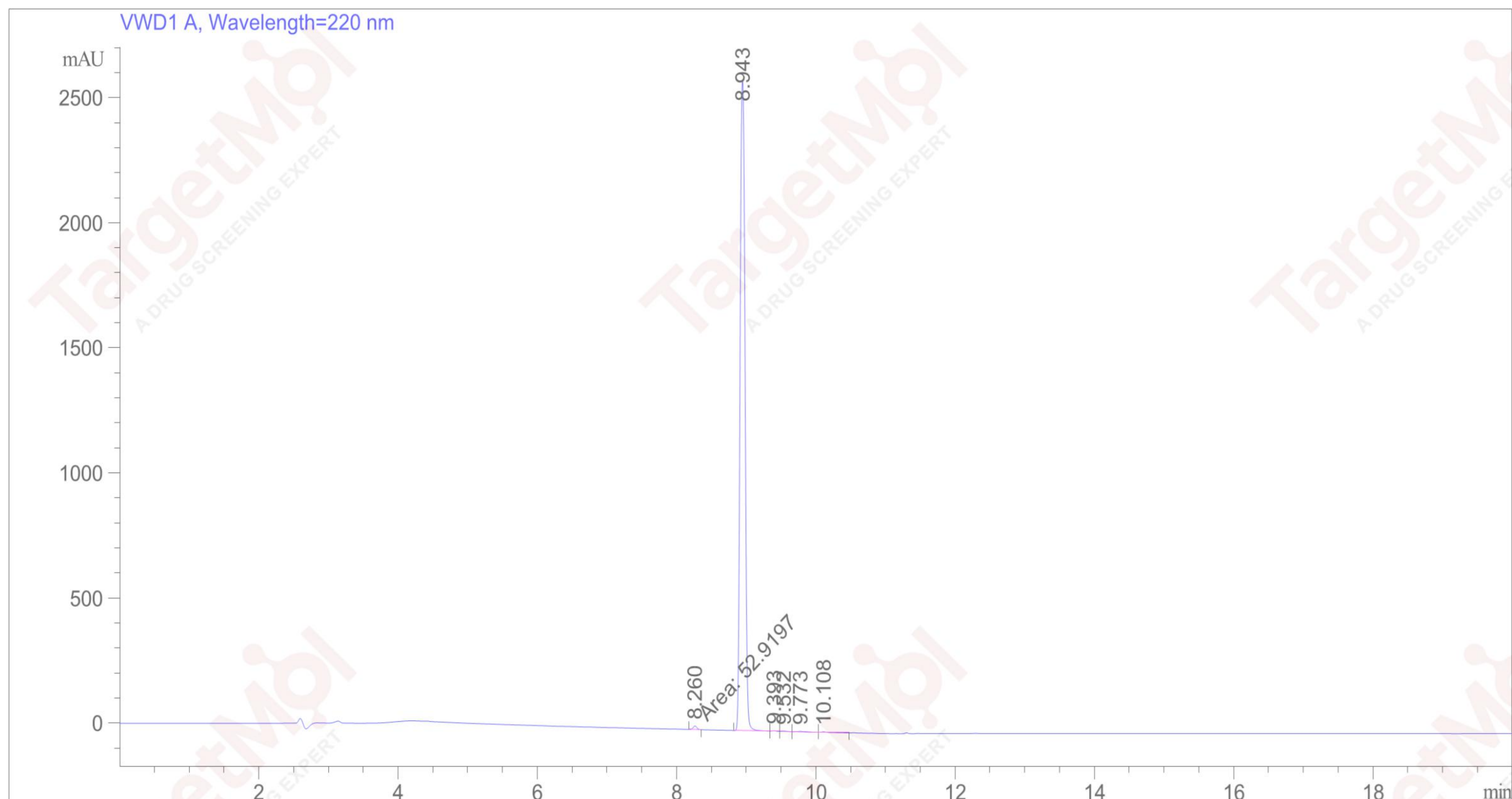


```

=====
Acq. Operator   : ZX                      Seq. Line :    7
Acq. Instrument : LC1260                 Location  : Vial 12
                                           Inj       :    1
                                           Inj Volume: 0 µl
Different Inj Volume from Sequence !    Actual Inj Volume : 3 µl
=====
    
```



Area Percent Report

```

=====
Sorted By      :      Signal
Multiplier     :      1.0000
Dilution       :      1.0000
Use Multiplier & Dilution Factor with ISTDs
    
```

Signal 1: VWD1 A, Wavelength=220 nm

Peak #	RetTime [min]	Type	Width [min]	Area [mAU*s]	Height [mAU]	Area %
1	8.260	MM	0.0629	52.91970	14.01589	0.4121
2	8.943	VV	0.0801	1.27299e4	2601.80664	99.1423
3	9.393	VV	0.0737	13.74148	2.73326	0.1070

Sample Name: T114111

Peak #	RetTime [min]	Type	Width [min]	Area [mAU*s]	Height [mAU]	Area %
4	9.532	VV	0.0803	10.31498	1.87114	0.0803
5	9.773	VV	0.1153	20.88465	2.38147	0.1627
6	10.108	VV	0.0785	12.26813	2.29143	0.0955

Totals : 1.28400e4 2625.09983

=====
*** End of Report ***