

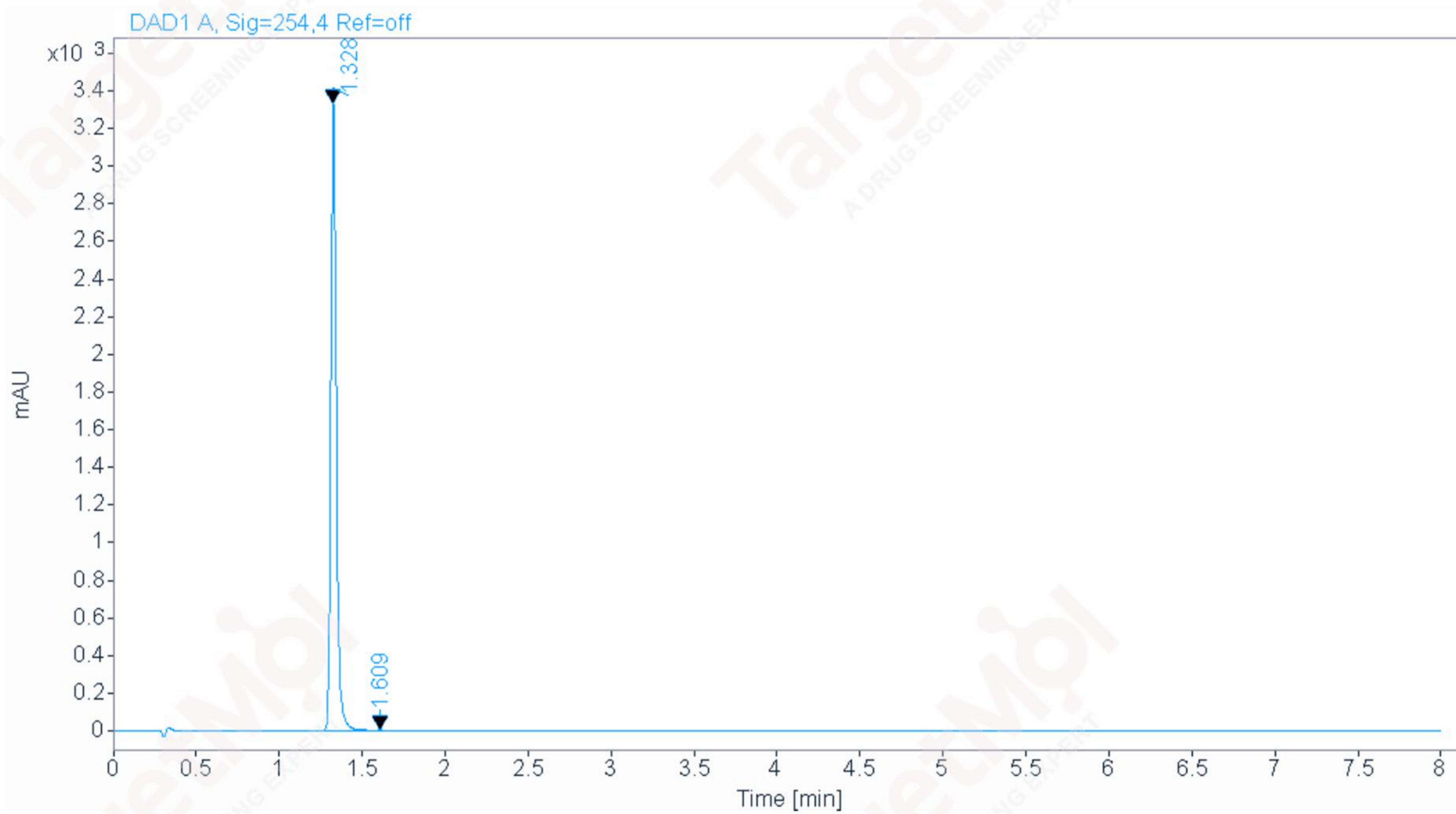
# Area Percent Report



Agilent Technologies

Data file: E:\HPLC\data\TEST\0CJK-2 12-09 16-57-05\003-P1-F7-14596717-17-27.D  
Sample name: 145967  
Instrument: 2DLC  
Sample type: Sample  
Location: P1-F7  
Acq. method: F0.6 254nm.M  
Injection: 1 of 1  
Analysis method: F0.6 254nm.M  
Injection volume: 1.500

FLOW RATE : 0.6ml/min  
COLUMN : ACE C18 50\*2.1 2um  
COLUMN TEMPERATURE : 30  
GRADIENT PROGRAMME :  
TIME(MIN) MOBILE PHASE-A(H2O+NH3/FA PH=8) MOBILE PHASE-B(CH3CN++NH3/FA PH=8)  
0 90% 10%  
10 0% 100%  
12 0% 100%



Signal: DAD1 A, Sig=254,4 Ref=off

RT [min]	Type	Width [min]	Area	Height	Area%	Name
1.328	BB	0.0401	8001.5547	3317.5881	99.9180	
1.609	MM	0.0378	6.5628	2.8939	0.0820	
	Sum		8008.1175			