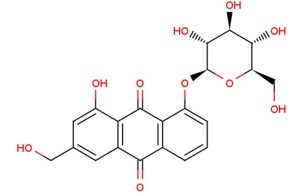


## Data Sheet (Cat.No.TN1053)

### Aloe-emodin-8-O-beta-D-glucopyranoside

#### Chemical Properties

CAS No.:	33037-46-6
Formula:	C21H20O10
Molecular Weight:	432.38
Appearance:	N/A
Storage:	0-4°C for short term (days to weeks), or -20°C for long term (months).



#### Biological Description

Description	Aloe-emodin-8-O-beta-D-glucopyranoside shows moderate bioactivity against human Protein Tyrosine Phosphatase 1B (hPTP1B) in vitro.
Targets(IC <sub>50</sub> )	PTP1B: None
In vitro	A new lignan glycoside, named 1,5-dihydroxypinoresinol-4'-O-beta-d-glucopyranoside (1), has been isolated from the EtOH extract of the roots of Saussurea lappa, together with twenty known compounds: (+)-1-hydroxypinoresinol-1-O-beta-D-glucopyranoside (2), fraxiresinol-4'-O-beta-D-glucopyranoside (3), (-)-olivil-4''-O-beta-D-glucopyranoside (4), 4-allyl-2,6-dimethoxybenzene-1-O-beta-D-glucopyranoside, syringin, costunolide-15-O-beta-D-glucopyranoside, chlorogenic acid, Aloe-emodin-8-O-beta-D-glucopyranoside (5), rhein-8-O-beta-D-glucopyranoside (6), chrysophanol (7), emodin, dehydrocostus lactone, costunolide, beta-costic acid, reynosin, arbusculin A, alpha-cyclocostunolide, beta-cyclocostunolide, santamarine and magnolialide.

#### Solubility Information

Solubility	DMSO: 10 mM ( < 1 mg/ml refers to the product slightly soluble or insoluble)
------------	---

#### Preparing Stock Solutions

	1mg	5mg	10mg
1 mM	2.313 mL	11.564 mL	23.128 mL
5 mM	0.463 mL	2.313 mL	4.626 mL
10 mM	0.231 mL	1.156 mL	2.313 mL
50 mM	0.046 mL	0.231 mL	0.463 mL

Please select the appropriate solvent to prepare the stock solution, according to the solubility of the product in different solvents. The storage conditions and period of the stock solution: - 80 °C for 6 months; - 20 °C for 1 month. Please use it as soon as possible.

#### Reference

1. PTP1B inhibitors from Saussurea lappa. J Asian Nat Prod Res. 2006 Apr-May;8(3):281-6.

Inhibitors · Natural Compounds · Compound Libraries

This product is for Research Use Only · Not for Human or Veterinary or Therapeutic Use.

Tel:781-999-4286

E-mail:[info@targetmol.com](mailto:info@targetmol.com)

Address:36 Washington Street,Wellesley Hills,MA 02481