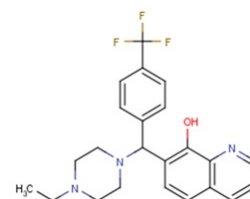


ML311

Chemical Properties

CAS No.:	315698-17-0
Formula:	C ₂₃ H ₂₄ F ₃ N ₃ O
Molecular Weight:	415.45
Appearance:	N/A
Storage:	0-4°C for short term (days to weeks), or -20°C for long term (months).



Biological Description

Description	ML311 is a selective inhibitor of the Mcl-1/Bim interaction.
Targets(IC ₅₀)	Mcl-1: None
In vitro	ML311 potently halts viability of several types of Mcl-1 primed cells, including MCL-1-1780 (EC ₅₀ : 0.31 μM), NCI-H929 (EC ₅₀ : 1.6 μM), and DHL-6 (EC ₅₀ : 3.3 μM), with generally high maximal effect (>80%). ML311 also displays activity in a leukemia-derived cell line particularly reliant upon Bcl-2 function (Bcl2-1863, EC ₅₀ : 1.1 μM). ML311 has strong growth inhibitory effects in many cell lines, with GI ₅₀ <900 nM for nine cell types (RPMI-8226, SR, NCI-H322M, NCI-H60, HCC-2998, KM12, SF-295, U251, PC-3 cell lines), and <2 μM for 14 additional types[1].

Solubility Information

Solubility	DMSO: 20 mg/mL Water: Insoluble Ethanol: 20 mg/mL (< 1 mg/ml refers to the product slightly soluble or insoluble)
------------	--

Preparing Stock Solutions

	1mg	5mg	10mg
1 mM	2.407 mL	12.035 mL	24.07 mL
5 mM	0.481 mL	2.407 mL	4.814 mL
10 mM	0.241 mL	1.204 mL	2.407 mL
50 mM	0.048 mL	0.241 mL	0.481 mL

Please select the appropriate solvent to prepare the stock solution, according to the solubility of the product in different solvents. The storage conditions and period of the stock solution: - 80 °C for 6 months; - 20 °C for 1 month. Please use it as soon as possible.

Reference

1. Bannister T, et al. ML311: A Small Molecule that Potently and Selectively Disrupts the Protein-Protein Interaction of Mcl-1 and Bim: A Probe for Studying Lymphoid Tumorigenesis. *Biotechnology Information (US)*; 2010-2012 Apr 16.

Inhibitors · Natural Compounds · Compound Libraries

This product is for Research Use Only · Not for Human or Veterinary or Therapeutic Use.

Tel:781-999-4286

E-mail:info@targetmol.com

Address:36 Washington Street,Wellesley Hills,MA 02481