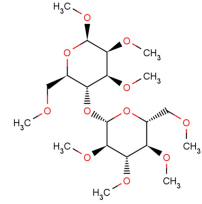


## Data Sheet (Cat.No.T19423)

Methyl cellulose

### Chemical Properties

CAS No.: 9004-67-5  
 Formula: C<sub>20</sub>H<sub>38</sub>O<sub>11</sub>  
 Molecular Weight: 454.51  
 Appearance: N/A  
 Storage: 0-4°C for short term (days to weeks), or -20°C for long term (months).



### Biological Description

Description	Methylcellulose is a natural polymer that gels on heating. Methylcellulose is not toxic.
Targets(IC <sub>50</sub> )	Others: None

### Solubility Information

Solubility	H <sub>2</sub> O: 1 mg/mL ( < 1 mg/ml refers to the product slightly soluble or insoluble)
------------	---

#### Preparing Stock Solutions

	1mg	5mg	10mg
1 mM	2.200 mL	11.001 mL	22.002 mL
5 mM	0.440 mL	2.200 mL	4.400 mL
10 mM	0.220 mL	1.100 mL	2.200 mL
50 mM	0.044 mL	0.220 mL	0.440 mL

Please select the appropriate solvent to prepare the stock solution, according to the solubility of the product in different solvents. The storage conditions and period of the stock solution: - 80 °C for 6 months; - 20 °C for 1 month. Please use it as soon as possible.

Inhibitors · Natural Compounds · Compound Libraries

This product is for Research Use Only · Not for Human or Veterinary or Therapeutic Use.

Tel:781-999-4286

E-mail:[info@targetmol.com](mailto:info@targetmol.com)

Address:36 Washington Street,Wellesley Hills,MA 02481