

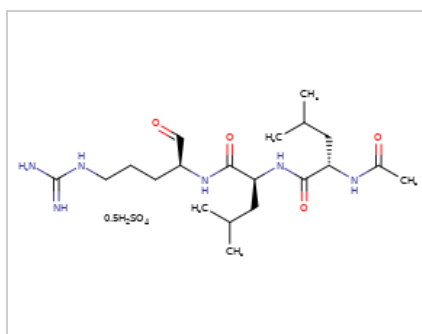
Certificate of Analysis

PRODUCT INFORMATION

Chemical Name: Leupeptin Hemisulfate
Cat. Number: T6564
CAS Number: 103476-89-7
Batch Number: 115646

PHYSICAL AND CHEMICAL PROPERTIES

Molecular Formula: C₂₀H₃₈N₆O₄·1/2H₂SO₄
Molecular Weight: 475.59
Storage: 0-4°C for short term (days to weeks), or -20°C for long term (months).
Chemical Structure:



ANALYTICAL DATA

¹H NMR Spectrum: Consistent with structure
HPLC: Consistent with structure
Purity: 90.00%
Conclusion: The test result is consistent with structure.

Reviewed By Christopher

Inhibitor • Natural Compounds • Compound Libraries

This product is for Research Use Only · Not for Human or Veterinary or Therapeutic Use.