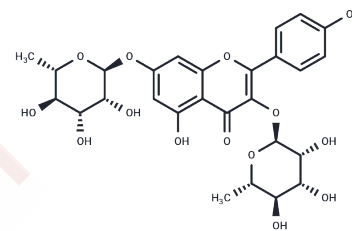


Kaempferitrin

Chemical Properties

CAS No. : 482-38-2
 Formula: C₂₇H₃₀O₁₄
 Molecular Weight: 578.52
 Storage: Powder: -20°C for 3 years | In solvent: -80°C for 1 year
Actual storage temperature shall be subject to the COA.



Biological Description

Description	Kaempferitrin (Lespenephryl) has antidepressant-like effect related to the serotonergic system, principally 5-HT _{1A} . Kaempferitrin exerts cytotoxic and antitumor effects against HeLa cells. Kaempferitrin stimulates glucose-metabolizing enzymes, promotes glucose homeostasis. Kaempferitrin exerts immunostimulatory effects on immune responses mediated by splenocytes, macrophages, PBMC and NK cells. Kaempferitrin induces cytotoxic effects to include: cell cycle arrest in G1 phase and apoptosis via the intrinsic pathway in a caspase-dependent pathway.
Targets(IC50)	Cell Cycle Arrest, Glucokinase, IGF-1R

Solubility Information

Solubility	DMSO: 61.25 mg/mL (105.87 mM), Sonication is recommended. (< 1 mg/ml refers to the product slightly soluble or insoluble)
In vivo Formulation	10% DMSO+40% PEG300+5% Tween 80+45% Saline: 2 mg/mL (3.46 mM), Sonication is recommended. <i>Please add the solvents sequentially, clarifying the solution as much as possible before adding the next one. Dissolve by heating and/or sonication if necessary. Working solution is recommended to be prepared and used immediately. The formulation provided above is for reference purposes only. In vivo formulations may vary and should be modified based on specific experimental conditions.</i>

Preparing Stock Solutions

	1mg	5mg	10mg
1 mM	1.7285 mL	8.6427 mL	17.2855 mL
5 mM	0.3457 mL	1.7285 mL	3.4571 mL
10 mM	0.1729 mL	0.8643 mL	1.7285 mL
50 mM	0.0346 mL	0.1729 mL	0.3457 mL

Please select the appropriate solvent to prepare the stock solution, according to the solubility of the product in different solvents. Please use it as soon as possible.

Note: The dilution table applies only to solid products. For liquid products, please calculate the stock solution based on the stated concentration and/or density.

Reference

Da Silva D, et al. IUBMB Life. 2014 May;66(5):361-70.

Cazarolli LH, et al. Eur J Pharmacol. 2013 Jul 15;712(1-3):1-7.

Del Carmen Juárez-Vázquez M, et al. J Ethnopharmacol. 2013 Jun 21;148(1):337-40.

Inhibitor · Natural Compounds · Compound Libraries · Recombinant Proteins

This product is for Research Use Only · Not for Human or Veterinary or Therapeutic Use

Tel:781-999-4286 E_mail:info@targetmol.com Address:34 Washington Street,Wellesley Hills,MA 02481