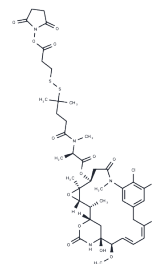


DM4-SPDP

Chemical Properties

CAS No. :	2245698-48-8
Formula:	C ₄₅ H ₆₁ ClN ₄ O ₁₄ S ₂
Molecular Weight:	981.57
Storage:	Keep away from direct sunlight Powder: -20°C for 3 years In solvent: -80°C for 1 year <small>Actual storage temperature shall be subject to the COA.</small>



Biological Description

Description	DM4-SPDP, a drug-linker conjugate, integrates the antitubulin agent DM4 with the linker SMCC, facilitating the creation of antibody drug conjugates[1]. Additionally, SPDP serves as a short-chain crosslinker enabling amine-to-sulfhydryl conjugation, leveraging NHS-ester and pyridyldithiol groups to establish cleavable (reducible) disulfide bonds with cysteine sulfhydryls[2][3].
Targets(IC50)	Microtubule Associated, Drug-Linker Conjugates for ADC, PROTAC Linker

Preparing Stock Solutions

	1mg	5mg	10mg
1 mM	1.0188 mL	5.0939 mL	10.1878 mL
5 mM	0.2038 mL	1.0188 mL	2.0376 mL
10 mM	0.1019 mL	0.5094 mL	1.0188 mL
50 mM	0.0204 mL	0.1019 mL	0.2038 mL

Please select the appropriate solvent to prepare the stock solution, according to the solubility of the product in different solvents. Please use it as soon as possible.

Note: The dilution table applies only to solid products. For liquid products, please calculate the stock solution based on the stated concentration and/or density.

Reference

Tang R, et al. P-gp activity is a critical resistance factor against AVE9633 and DM4 cytotoxicity in leukaemia cell lines, but not a major mechanism of chemoresistance in cells from acute myeloid leukaemia patients. *BMC Cancer*. 2009 Jun 23;9:199.

Lobedanz S et al. A periplasmic coiled-coil interface underlying TolC recruitment and the assembly of bacterial drug efflux pumps. *Proc Natl Acad Sci U S A*, 2007 Mar 13, 104(11):4612-7.

Karumuthil-Melethil S et al. Dendritic cell-directed CTLA-4 engagement during pancreatic beta cell antigen presentation delays type 1 diabetes. *J Immunol* 2010 Jun 15, 184(12):6695-708.

Inhibitor · Natural Compounds · Compound Libraries · Recombinant Proteins

This product is for Research Use Only · Not for Human or Veterinary or Therapeutic Use

Tel:781-999-4286 E_mail:info@targetmol.com Address:34 Washington Street,Wellesley Hills,MA 02481