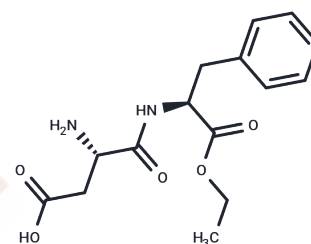


Ethyl aspartylphenylalaninate

Chemical Properties

CAS No. :	22839-83-4
Formula:	C ₁₅ H ₂₀ N ₂ O ₅
Molecular Weight:	308.33
Storage:	Powder: -20°C for 3 years In solvent: -80°C for 1 year Actual storage temperature shall be subject to the COA.



Biological Description

Description	Ethyl aspartylphenylalaninate is an artificial non-saccharide sweetener used as a sugar substitute.
Targets(IC50)	Others

Preparing Stock Solutions

	1mg	5mg	10mg
1 mM	3.2433 mL	16.2164 mL	32.4328 mL
5 mM	0.6487 mL	3.2433 mL	6.4866 mL
10 mM	0.3243 mL	1.6216 mL	3.2433 mL
50 mM	0.0649 mL	0.3243 mL	0.6487 mL

Please select the appropriate solvent to prepare the stock solution, according to the solubility of the product in different solvents. Please use it as soon as possible.

Note: The dilution table applies only to solid products. For liquid products, please calculate the stock solution based on the stated concentration and/or density.

Reference

- Löser C, Urit T, Bley T. Perspectives for the biotechnological production of ethyl acetate by yeasts. *Appl Microbiol Biotechnol.* 2014 Jun;98(12):5397-415. doi: 10.1007/s00253-014-5765-9. Epub 2014 May 1. Review. PubMed PMID: 24788328.
- Crowell SR, Smith JN, Creim JA, Faber W, Teeguarden JG. Physiologically based pharmacokinetic modeling of ethyl acetate and ethanol in rodents and humans. *Regul Toxicol Pharmacol.* 2015 Oct;73(1):452-62. doi: 10.1016/j.yrtph.2015.07.021. Epub 2015 Aug 18. PubMed PMID: 26297692.
- Kim ES, McCormack PL. Icosapent ethyl: a review of its use in severe hypertriglyceridemia. *Am J Cardiovasc Drugs.* 2014 Dec;14(6):471-8. doi: 10.1007/s40256-014-0099-7. Review. PubMed PMID: 25428605.
- Braeckman RA, Stirtan WG, Soni PN. Effects of Icosapent Ethyl (Eicosapentaenoic Acid Ethyl Ester) on Pharmacokinetic Parameters of Rosiglitazone in Healthy Subjects. *Clin Pharmacol Drug Dev.* 2015 Mar;4(2):143-148. Epub 2014 Dec 3. PubMed PMID: 26097794; PubMed Central PMCID: PMC4467261.

Inhibitor · Natural Compounds · Compound Libraries · Recombinant Proteins

This product is for Research Use Only · Not for Human or Veterinary or Therapeutic Use

Tel:781-999-4286 E_mail:info@targetmol.com Address:34 Washington Street,Wellesley Hills,MA 02481