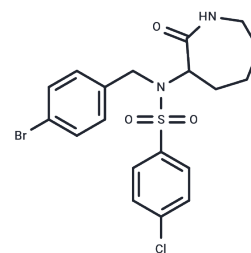


ELN318463 racemate

Chemical Properties

CAS No. : 851599-82-1
 Formula: C₁₉H₂₀BrClN₂O₃S
 Molecular Weight: 471.8
 Storage: Powder: -20°C for 3 years | In solvent: -80°C for 1 year
Actual storage temperature shall be subject to the COA.



Biological Description

Description	ELN318463 racemate (ELN 318463 racemate) is the racemate of ELN318463 which is an amyloid precursor protein (APP) selective γ -secretase inhibitor.
Targets(IC50)	Gamma-secretase
In vitro	ELN318463 shows differential inhibition of presenilin (PS1)- and PS2-comprised γ -secretase with EC ₅₀ s of 12nM and 656 nM for PS1 and PS2, respectively[1].
In vivo	Brain levels of ELN318463 (30 mg/kg) are 0.754 μ M in FVB brains and 0.69 μ M, and of ELN318463(100 mg/kg) are 2.7 μ M in FVB brains and 1.87 μ M in PDAPP brains[1].

Solubility Information

Solubility	DMSO: 50 mg/mL (105.98 mM),Sonication is recommended. (< 1 mg/ml refers to the product slightly soluble or insoluble)
------------	--

Preparing Stock Solutions

	1mg	5mg	10mg
1 mM	2.1195 mL	10.5977 mL	21.1954 mL
5 mM	0.4239 mL	2.1195 mL	4.2391 mL
10 mM	0.212 mL	1.0598 mL	2.1195 mL
50 mM	0.0424 mL	0.212 mL	0.4239 mL

Please select the appropriate solvent to prepare the stock solution, according to the solubility of the product in different solvents. Please use it as soon as possible.

Note: The dilution table applies only to solid products. For liquid products, please calculate the stock solution based on the stated concentration and/or density.

Reference

Zhao B, et al. Identification of gamma-secretase inhibitor potency determinants on presenilin. J Biol Chem. 2008 Feb 1;283(5):2927-38.

Basi GS, et al. Amyloid precursor protein selective gamma-secretase inhibitors for treatment of Alzheimer's disease. Alzheimers Res Ther. 2010 Dec 29;2(6):36.

Inhibitor · Natural Compounds · Compound Libraries · Recombinant Proteins

This product is for Research Use Only. Not for Human or Veterinary or Therapeutic Use

Tel:781-999-4286 E_mail:info@targetmol.com Address:34 Washington Street,Wellesley Hills,MA 02481