

(+)-Armepavine

Chemical Properties

CAS No. : 14400-96-5

Formula: C₁₉H₂₃NO₃

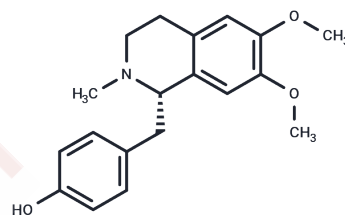
Molecular Weight: 313.39

Storage:

Keep away from direct sunlight, Keep away from moisture, Store at low temperature

Powder: -20°C for 3 years | In solvent: -80°C for 1 year

Actual storage temperature shall be subject to the COA.



Biological Description

Description	(+)-Armepavine is an active compound from <i>Nelumbo nucifera</i> that exhibits anti-inflammatory effects on human peripheral blood mononuclear cells, immunosuppressive effects on T lymphocytes, and protective activity in lupus nephritic mice, in part by inhibiting TNF- α -induced MAPK and NF- κ B signaling pathways.
Targets(IC50)	TNF

Preparing Stock Solutions

	1mg	5mg	10mg
1 mM	3.1909 mL	15.9546 mL	31.9091 mL
5 mM	0.6382 mL	3.1909 mL	6.3818 mL
10 mM	0.3191 mL	1.5955 mL	3.1909 mL
50 mM	0.0638 mL	0.3191 mL	0.6382 mL

Please select the appropriate solvent to prepare the stock solution, according to the solubility of the product in different solvents. Please use it as soon as possible.

Note: The dilution table applies only to solid products. For liquid products, please calculate the stock solution based on the stated concentration and/or density.

Reference

Geng P, et al. Determination of armepavine in mouse blood by UPLC-MS/MS and its application to pharmacokinetic study. *Biomed Chromatogr.* 2018 May 3:e4273.

Morikawa T, et al. Quantitative Determination of Alkaloids in Lotus Flower (Flower Buds of *Nelumbo nucifera*) and Their Melanogenesis Inhibitory Activity. *Molecules.* 2016 Jul 19;21(7). pii: E930.

Kumarihamy M, et al. In vitro opioid receptor affinity and in vivo behavioral studies of *Nelumbo nucifera* flower. *J Ethnopharmacol.* 2015 Nov 4;174:57-65.

Ruiz-Olalla A, et al. Organocatalytic enantioselective Pictet-Spengler approach to biologically relevant 1-benzyl-1,2,3,4-tetrahydroisoquinoline alkaloids. *J Org Chem.* 2015 May 15;80(10):5125-32.

Inhibitor · Natural Compounds · Compound Libraries · Recombinant Proteins

This product is for Research Use Only · Not for Human or Veterinary or Therapeutic Use

Tel:781-999-4286 E_mail:info@targetmol.com Address:34 Washington Street,Wellesley Hills,MA 02481