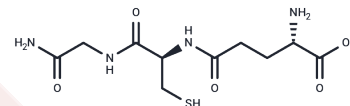


Glutathione amide

Chemical Properties

CAS No. :	82147-51-1
Formula:	C10H18N4O5S
Molecular Weight:	306.34
Storage:	Powder: -20°C for 3 years In solvent: -80°C for 1 year Actual storage temperature shall be subject to the COA.



Biological Description

Description	Glutathione amide is a enzyme of a chimeric protein.
Targets(IC50)	Others

Preparing Stock Solutions

	1mg	5mg	10mg
1 mM	3.2643 mL	16.3217 mL	32.6435 mL
5 mM	0.6529 mL	3.2643 mL	6.5287 mL
10 mM	0.3264 mL	1.6322 mL	3.2643 mL
50 mM	0.0653 mL	0.3264 mL	0.6529 mL

Please select the appropriate solvent to prepare the stock solution, according to the solubility of the product in different solvents. Please use it as soon as possible.

Note: The dilution table applies only to solid products. For liquid products, please calculate the stock solution based on the stated concentration and/or density.

Reference

- Van Petegem F, De Vos D, Savvides S, Vergauwen B, Van Beeumen J. Understanding nicotinamide dinucleotide cofactor and substrate specificity in class I flavoprotein disulfide oxidoreductases: crystallographic analysis of a glutathione amide reductase. *J Mol Biol.* 2007 Dec 7;374(4):883-9. Epub 2007 Sep 29. PubMed PMID: 17977556.
- Vergauwen B, Pauwels F, Vaneechoutte M, Van Beeumen JJ. Exogenous glutathione completes the defense against oxidative stress in *Haemophilus influenzae*. *J Bacteriol.* 2003 Mar;185(5):1572-81. PubMed PMID: 12591874; PubMed Central PMCID: PMC148052.
- Vergauwen B, Van Petegem F, Remaut H, Pauwels F, Van Beeumen JJ. Crystallization and preliminary X-ray crystallographic analysis of glutathione amide reductase from *Chromatium gracile*. *Acta Crystallogr D Biol Crystallogr.* 2002 Feb;58(Pt 2):339-40. Epub 2002 Jan 24. PubMed PMID: 11807270.
- Fahey RC. Novel thiols of prokaryotes. *Annu Rev Microbiol.* 2001;55:333-56. Review. PubMed PMID: 11544359.

Inhibitor · Natural Compounds · Compound Libraries · Recombinant Proteins

This product is for Research Use Only · Not for Human or Veterinary or Therapeutic Use

Tel:781-999-4286 E_mail:info@targetmol.com Address:34 Washington Street,Wellesley Hills,MA 02481