

## Cloprostenol

## Chemical Properties

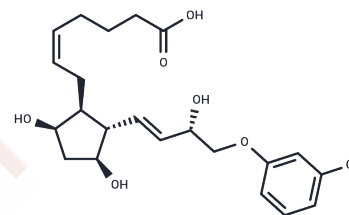
CAS No. : 40665-92-7

Formula: C<sub>22</sub>H<sub>29</sub>ClO<sub>6</sub>

Molecular Weight: 424.92

Storage: Store under nitrogen, Store at low temperature  
Powder: -20°C for 3 years | In solvent: -80°C for 1 year

Actual storage temperature shall be subject to the COA.



## Biological Description

Description	Cloprostenol is a synthetic prostaglandin and PGF <sub>2</sub> α analogue used in animals to terminate pregnancy and induce corpus luteum dissolution.
Targets(IC <sub>50</sub> )	Prostaglandin Receptor

## Solubility Information

Solubility	DMSO: 1 mg/mL (2.35 mM), Sonication is recommended. (< 1 mg/ml refers to the product slightly soluble or insoluble)
------------	--

## Preparing Stock Solutions

	1mg	5mg	10mg
1 mM	2.3534 mL	11.7669 mL	23.5338 mL
5 mM	0.4707 mL	2.3534 mL	4.7068 mL
10 mM	0.2353 mL	1.1767 mL	2.3534 mL
50 mM	0.0471 mL	0.2353 mL	0.4707 mL

Please select the appropriate solvent to prepare the stock solution, according to the solubility of the product in different solvents. Please use it as soon as possible.

Note: The dilution table applies only to solid products. For liquid products, please calculate the stock solution based on the stated concentration and/or density.

### Reference

Yang F,et,al. Effect of cloprostenol on luteolysis and comparison of different estrus synchronization protocols in jennies. Anim Reprod Sci. 2023 Jun;253:107263.

Roldan-Juárez J, Pinares R, Lozano F, Machaca V, Quispe-Gutiérrez US, Pizarro DM. Cloprostenol effect with and without male stimulation on oestrus synchronization in Peru guinea pigs. Reprod Domest Anim. 2024 May;59(5): e14574.

Karakus S, Dogan HO, Özkaraca M. The protective effect of Cloprostenol on ischemia/reperfusion injury in rat ovary: Histopathologic and immunohistochemically evaluation: An experimental study. Transpl Immunol. 2024 Oct;86:102108.

Wang H,et,al. Enantioseparation of cloprostenol on the polysaccharide chiral stationary phase: Influence of the mobile phase on enantioselective adsorption. J Chromatogr A. 2021 Sep 13;1653:462413.

**Inhibitor · Natural Compounds · Compound Libraries · Recombinant Proteins**

This product is for Research Use Only· Not for Human or Veterinary or Therapeutic Use

Tel:781-999-4286 E\_mail:info@targetmol.com Address:34 Washington Street,Wellesley Hills,MA 02481