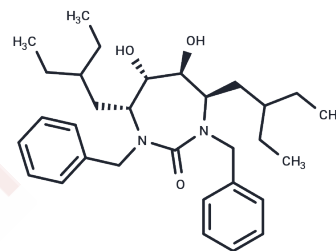


XR 808

Chemical Properties

CAS No. : 167826-88-2
 Formula: C₃₁H₄₆N₂O₃
 Molecular Weight: 494.71
 Storage: Powder: -20°C for 3 years | In solvent: -80°C for 1 year
 Actual storage temperature shall be subject to the COA.



Biological Description

Description	XR 808 is a biochemical.
Targets(IC50)	Others

Preparing Stock Solutions

	1mg	5mg	10mg
1 mM	2.0214 mL	10.1069 mL	20.2139 mL
5 mM	0.4043 mL	2.0214 mL	4.0428 mL
10 mM	0.2021 mL	1.0107 mL	2.0214 mL
50 mM	0.0404 mL	0.2021 mL	0.4043 mL

Please select the appropriate solvent to prepare the stock solution, according to the solubility of the product in different solvents. Please use it as soon as possible.

Note: The dilution table applies only to solid products. For liquid products, please calculate the stock solution based on the stated concentration and/or density.

Reference

Zhang Y, Lei BH, Zou Q, Zhu QY, Lu ZJ, Wang Y. [Clinical efficacy of integrated traditional Chinese and Western medicine for castration-resistant prostate cancer]. *Zhonghua Nan Ke Xue*. 2017 Oct;23(10):922-927. Chinese. PubMed PMID: 29727544.

Chauchat L, Tanguay C, Caron NJ, Gagné S, Labrèche F, Bussièrès JF. Surface contamination with ten antineoplastic drugs in 83 Canadian centers. *J Oncol Pharm Pract*. 2018 Jan 1:1078155218773862. doi: 10.1177/1078155218773862. [Epub ahead of print] PubMed PMID: 29726786.

Pandey G, Mittapelly N, Banala VT, Mishra PR. Multifunctional Glycoconjugate Assisted Nanocrystalline Drug Delivery for Tumor Targeting and Permeabilization of Lysosomal-Mitochondrial Membrane. *ACS Appl Mater Interfaces*. 2018 May 4. doi: 10.1021/acsami.7b18699. [Epub ahead of print] PubMed PMID: 29726253.

Škereňová M, Mikulová V, Čapoun O, Švec D, Kološťová K, Soukup V, Honová H, Hanuš T, Zima T. Gene Expression Analysis of Immunomagnetically Enriched Circulating Tumor Cell Fraction in Castration-Resistant Prostate Cancer. *Mol Diagn Ther*. 2018 May 3. doi: 10.1007/s40291-018-0333-0. [Epub ahead of print] PubMed PMID: 29725990.

Inhibitor · Natural Compounds · Compound Libraries · Recombinant Proteins

This product is for Research Use Only · Not for Human or Veterinary or Therapeutic Use

Tel:781-999-4286 E_mail:info@targetmol.com Address:34 Washington Street,Wellesley Hills,MA 02481