

Gp100 (25-33), mouse

Chemical Properties

CAS No. : 212370-36-0

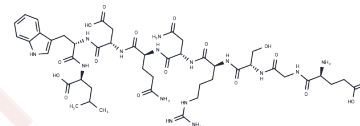
Formula: C46H69N15O17

Molecular Weight: 1104.146

Keep away from moisture

Storage: Powder: -20°C for 3 years | In solvent: -80°C for 1 year

Actual storage temperature shall be subject to the COA.



Biological Description

Description	Gp100 (25-33) corresponds to residues 25 to 33 of the mouse self/tumor antigen glycoprotein (mgp100), which is an enzyme responsible for pigment synthesis. This epitope fragment is found in both normal melanocytes and melanoma cells.
-------------	---

Preparing Stock Solutions

	1mg	5mg	10mg
1 mM	0.9057 mL	4.5284 mL	9.0567 mL
5 mM	0.1811 mL	0.9057 mL	1.8113 mL
10 mM	0.0906 mL	0.4528 mL	0.9057 mL
50 mM	0.0181 mL	0.0906 mL	0.1811 mL

Please select the appropriate solvent to prepare the stock solution, according to the solubility of the product in different solvents. Please use it as soon as possible.

Note: The dilution table applies only to solid products. For liquid products, please calculate the stock solution based on the stated concentration and/or density.

Reference

Gal Cafri, et al. Production of LacZ inducible T cell hybridoma specific for human and mouse gp100₂₅₋₃₃ peptides. PLoS One. 2013;8(2):e55583.

Inhibitor · Natural Compounds · Compound Libraries · Recombinant Proteins

This product is for Research Use Only · Not for Human or Veterinary or Therapeutic Use

Tel:781-999-4286 E_mail:info@targetmol.com Address:34 Washington Street,Wellesley Hills,MA 02481