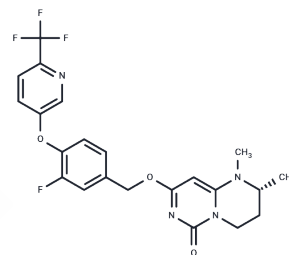


Lp-PLA2-IN-11

Chemical Properties

CAS No. : 1620680-19-4
 Formula: C₂₂H₂₀F₄N₄O₃
 Molecular Weight: 464.41
 Storage: Powder: -20°C for 3 years | In solvent: -80°C for 1 year
 Actual storage temperature shall be subject to the COA.



Biological Description

Description	Lp-PLA2-IN-11 is a potent inhibitor of lipoprotein-associated phospholipase A2 (Lp-PLA2) with potential applications in diseases associated with Lp-PLA2 activity [e.g., atherosclerosis, Alzheimer's disease].
Targets(IC50)	Others,Phospholipase

Preparing Stock Solutions

	1mg	5mg	10mg
1 mM	2.1533 mL	10.7663 mL	21.5327 mL
5 mM	0.4307 mL	2.1533 mL	4.3065 mL
10 mM	0.2153 mL	1.0766 mL	2.1533 mL
50 mM	0.0431 mL	0.2153 mL	0.4307 mL

Please select the appropriate solvent to prepare the stock solution, according to the solubility of the product in different solvents. Please use it as soon as possible.

Note: The dilution table applies only to solid products. For liquid products, please calculate the stock solution based on the stated concentration and/or density.

Inhibitor · Natural Compounds · Compound Libraries · Recombinant Proteins

This product is for Research Use Only · Not for Human or Veterinary or Therapeutic Use

Tel:781-999-4286 E_mail:info@targetmol.com Address:34 Washington Street,Wellesley Hills,MA 02481