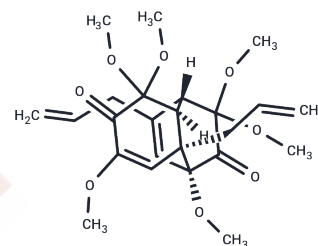


Asatone

Chemical Properties

CAS No. :	38451-63-7
Formula:	C ₂₄ H ₃₂ O ₈
Molecular Weight:	448.51
Storage:	Powder: -20°C for 3 years In solvent: -80°C for 1 year Actual storage temperature shall be subject to the COA.



Biological Description

Description	Asatone, an active component isolated from Radix et Rhizoma Asari, has an anti-inflammatory effect via activation of NF- κ B and downregulation of p-MAPK (ERK, JNK, and p38) pathways.
Targets(IC50)	NF- κ B

Solubility Information

Solubility	DMSO: 60 mg/mL (133.78 mM), Sonication is recommended. (< 1 mg/ml refers to the product slightly soluble or insoluble)
In vivo Formulation	10% DMSO+40% PEG300+5% Tween 80+45% Saline: 2 mg/mL (4.46 mM), Sonication is recommended. <i>Please add the solvents sequentially, clarifying the solution as much as possible before adding the next one. Dissolve by heating and/or sonication if necessary. Working solution is recommended to be prepared and used immediately. The formulation provided above is for reference purposes only. In vivo formulations may vary and should be modified based on specific experimental conditions.</i>

Preparing Stock Solutions

	1mg	5mg	10mg
1 mM	2.2296 mL	11.148 mL	22.296 mL
5 mM	0.4459 mL	2.2296 mL	4.4592 mL
10 mM	0.223 mL	1.1148 mL	2.2296 mL
50 mM	0.0446 mL	0.223 mL	0.4459 mL

Please select the appropriate solvent to prepare the stock solution, according to the solubility of the product in different solvents. Please use it as soon as possible.

Note: The dilution table applies only to solid products. For liquid products, please calculate the stock solution based on the stated concentration and/or density.

Reference

Chang HY, et al. Asatone Prevents Acute Lung Injury by Reducing Expressions of NF-[Formula: see text]B, MAPK and Inflammatory Cytokines. Am J Chin Med. 2018;46(3):651-671.

Inhibitor · Natural Compounds · Compound Libraries · Recombinant Proteins

This product is for Research Use Only · Not for Human or Veterinary or Therapeutic Use

Tel:781-999-4286 E_mail:info@targetmol.com Address:34 Washington Street,Wellesley Hills,MA 02481