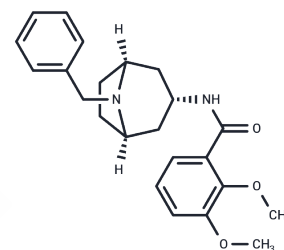


Tropapride

Chemical Properties

CAS No. :	76352-13-1
Formula:	C ₂₃ H ₂₈ N ₂ O ₃
Molecular Weight:	380.48
Storage:	Powder: -20°C for 3 years In solvent: -80°C for 1 year Actual storage temperature shall be subject to the COA.



Biological Description

Description	Tropapride is a benzamide derivative.
Targets(IC50)	Others

Preparing Stock Solutions

	1mg	5mg	10mg
1 mM	2.6283 mL	13.1413 mL	26.2826 mL
5 mM	0.5257 mL	2.6283 mL	5.2565 mL
10 mM	0.2628 mL	1.3141 mL	2.6283 mL
50 mM	0.0526 mL	0.2628 mL	0.5257 mL

Please select the appropriate solvent to prepare the stock solution, according to the solubility of the product in different solvents. Please use it as soon as possible.

Note: The dilution table applies only to solid products. For liquid products, please calculate the stock solution based on the stated concentration and/or density.

Reference

Strolin Benedetti M, Dow J, Dostert S, Parisy D, Rumigny JF. Localization of a new benzamide derivative, tropapride and of 1-sulpiride, in the pituitary gland of the rat. *J Pharmacol.* 1984 Oct-Dec;15(4):433-8. PubMed PMID: 6543239.

Collin S, Vercauteren DP, Vanderveken D, Evrard G, Durant F. Structural requirements of Na⁺-dependent antidopaminergic agents: Tropapride, Piquindone, Zetidoline, and Metoclopramide. Comparison with Na⁺-independent ligands. *J Comput Aided Mol Des.* 1989 Mar;3(1):39-53. PubMed PMID: 2715795.

Damhaut P, Cantineau R, Lemaire C, Plenevaux A, Christiaens L, Guillaume M. 2- and 4-[¹⁸F]fluorotropapride, two specific D₂ receptor ligands for positron emission tomography: N.C.A. syntheses and animal studies. *Int J Rad Appl Instrum A.* 1992 Oct;43(10):1265-74. PubMed PMID: 1330979.

Rumigny JF, Strolin Benedetti M, Dostert P. Investigation on central dopaminergic receptors (D-2) using the antagonistic properties of new benzamides. *J Pharm Pharmacol.* 1984 Jun;36(6):373-7. PubMed PMID: 6146667.

Inhibitor · Natural Compounds · Compound Libraries · Recombinant Proteins

This product is for Research Use Only · Not for Human or Veterinary or Therapeutic Use

Tel:781-999-4286 E_mail:info@targetmol.com Address:34 Washington Street,Wellesley Hills,MA 02481