

## BODIPY-Cholesterol

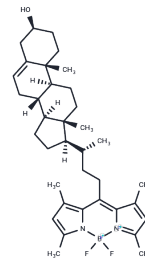
### Chemical Properties

CAS No. : 878557-19-8

Formula: C<sub>36</sub>H<sub>51</sub>BF<sub>2</sub>N<sub>2</sub>O

Molecular Weight: 576.61

Storage: Store at low temperature, Keep away from direct sunlight  
 Powder: -20°C for 3 years | In solvent: -80°C for 1 year  
 Actual storage temperature shall be subject to the COA.



### Biological Description

Description	BODIPY-Cholesterol (TF-Chol) is a cholesterol analog with a fluorescent BODIPY motif and cellular permeability, and is a novel BODIPY cholesterol probe. BODIPY-Cholesterol can be used to study intracellular sterol uptake and interorganelle sterol flux.
Targets(IC50)	Others
In vitro	For the BODIPY-cholesterol assay: Reconstitute the analogue in DMSO to prepare a stock solution of BODIPY-cholesterol at a concentration of 1-10 μM[2]. Dilute cells with PBS (or other buffers), wash them (300×g, 10 min) to eliminate excess diluent, and resuspend the loose pellet with vehicle media to achieve the desired concentration[2]. Label cell suspensions with BODIPY-cholesterol (final concentration of 0.5-5 μM), ensuring thorough mixing, and incubate for 10-20 minutes at 37 °C[1]. Dilute the cells with each of the capacitance media conditions, as outlined in Incubation media, to a final concentration. Incubate for 2 hours before flow cytometric assessment [2].

### Solubility Information

Solubility	DMSO: 1 mg/mL (1.73 mM), Sonication is recommended. H <sub>2</sub> O: <0.1 mg/mL (Insoluble) (< 1 mg/ml refers to the product slightly soluble or insoluble)
------------	--

### Preparing Stock Solutions

---

	1mg	5mg	10mg
1 mM	1.7343 mL	8.6714 mL	17.3427 mL
5 mM	0.3469 mL	1.7343 mL	3.4685 mL
10 mM	0.1734 mL	0.8671 mL	1.7343 mL
50 mM	0.0347 mL	0.1734 mL	0.3469 mL

---

Please select the appropriate solvent to prepare the stock solution, according to the solubility of the product in different solvents. Please use it as soon as possible.

Note: The dilution table applies only to solid products. For liquid products, please calculate the stock solution based on the stated concentration and/or density.

### Reference

Maarit Hölttä-Vuori, et al. BODIPY-cholesterol: a new tool to visualize sterol trafficking in living cells and organisms. *Traffic*. 2008 Nov;9(11):1839-49.

Daniel Wüstner, et al. Potential of BODIPY-cholesterol for analysis of cholesterol transport and diffusion in living cells. *Chem Phys Lipids*. 2016 Jan;194:12-28.

Raulin AC, et al. An assay to evaluate the capacity of cholesterol acceptors using BODIPY-cholesterol in cells. *STAR Protoc*. 2023 Mar 17;4(1):101976.

**Inhibitor · Natural Compounds · Compound Libraries · Recombinant Proteins**

This product is for Research Use Only · Not for Human or Veterinary or Therapeutic Use

Tel: 781-999-4286 E\_mail: info@targetmol.com Address: 34 Washington Street, Wellesley Hills, MA 02481