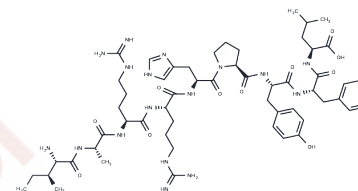


Kinetensin

Chemical Properties

CAS No. :	103131-69-7
Formula:	C56H85N17O11
Molecular Weight:	1172.38
Storage:	Keep away from moisture Powder: -20°C for 3 years In solvent: -80°C for 1 year <small>Actual storage temperature shall be subject to the COA.</small>



Biological Description

Description	Kinetensin is a neurotensin-like peptide.
Targets(IC50)	Neurotensin Receptor,Endogenous Metabolite

Preparing Stock Solutions

	1mg	5mg	10mg
1 mM	0.853 mL	4.2648 mL	8.5297 mL
5 mM	0.1706 mL	0.853 mL	1.7059 mL
10 mM	0.0853 mL	0.4265 mL	0.853 mL
50 mM	0.0171 mL	0.0853 mL	0.1706 mL

Please select the appropriate solvent to prepare the stock solution, according to the solubility of the product in different solvents. Please use it as soon as possible.

Note: The dilution table applies only to solid products. For liquid products, please calculate the stock solution based on the stated concentration and/or density.

Reference

Mogard MH, et al. The amino acid sequence of kinetensin, a novel peptide isolated from pepsin-treated human plasma: homology with human serum albumin, neurotensin and angiotensin. *Biochem Biophys Res Commun.* 1986 May 14;136(3):983-8.

Song K, Yang X, An G, et al. Targeting APLN/APJ restores blood-testis barrier and improves spermatogenesis in murine and human diabetic models. *Nature Communications.* 2022, 13(1): 1-17.

Inhibitor · Natural Compounds · Compound Libraries · Recombinant Proteins

This product is for Research Use Only · Not for Human or Veterinary or Therapeutic Use

Tel:781-999-4286 E_mail:info@targetmol.com Address:34 Washington Street,Wellesley Hills,MA 02481