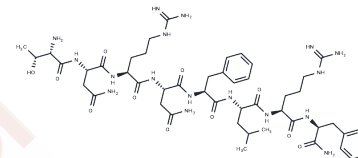


## Tnrnflrfamide

## Chemical Properties

CAS No. :	113611-68-0
Formula:	C48H75N17O11
Molecular Weight:	1066.22
Storage:	Keep away from moisture Powder: -20°C for 3 years   In solvent: -80°C for 1 year <small>Actual storage temperature shall be subject to the COA.</small>



## Biological Description

Description	Tnrnflrfamide is a SCP (small cardioactive peptide)-like peptide found in lobster neurons; exhibits FMRFamide-like immunoreactivity.
Targets(IC50)	Others

## Preparing Stock Solutions

	1mg	5mg	10mg
1 mM	0.9379 mL	4.6895 mL	9.3789 mL
5 mM	0.1876 mL	0.9379 mL	1.8758 mL
10 mM	0.0938 mL	0.4689 mL	0.9379 mL
50 mM	0.0188 mL	0.0938 mL	0.1876 mL

Please select the appropriate solvent to prepare the stock solution, according to the solubility of the product in different solvents. Please use it as soon as possible.

Note: The dilution table applies only to solid products. For liquid products, please calculate the stock solution based on the stated concentration and/or density.

## Reference

- Weimann JM, Marder E, Evans B, Calabrese RL. The effects of SDRNFLRFamide and TNRNFLRFamide on the motor patterns of the stomatogastric ganglion of the crab *Cancer borealis*. *J Exp Biol*. 1993 Aug;181:1-26. PubMed PMID: 8409825.
- Jorge-Rivera JC, Marder E. TNRNFLRFamide and SDRNFLRFamide modulate muscles of the stomatogastric system of the crab *Cancer borealis*. *J Comp Physiol A*. 1996 Dec;179(6):741-51. PubMed PMID: 8956495.
- Jorge-Rivera JC, Sen K, Birmingham JT, Abbott LF, Marder E. Temporal dynamics of convergent modulation at a crustacean neuromuscular junction. *J Neurophysiol*. 1998 Nov;80(5):2559-70. PubMed PMID: 9819263.
- Arbiser ZK, Beltz BS. SCPB- and FMRFamide-like immunoreactivities in lobster neurons: colocalization of distinct peptides or colabeling of the same peptide(s)? *J Comp Neurol*. 1991 Apr 15;306(3):417-24. PubMed PMID: 1865002.

**Inhibitor · Natural Compounds · Compound Libraries · Recombinant Proteins**

This product is for Research Use Only · Not for Human or Veterinary or Therapeutic Use

Tel:781-999-4286 E\_mail:info@targetmol.com Address:34 Washington Street,Wellesley Hills,MA 02481