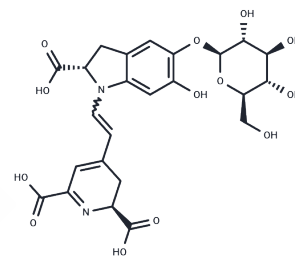


## Betanin

## Chemical Properties

CAS No. :	7659-95-2
Formula:	C <sub>24</sub> H <sub>26</sub> N <sub>2</sub> O <sub>13</sub>
Molecular Weight:	550.47
Storage:	Keep away from moisture, Keep away from direct sunlight Powder: -20°C for 3 years   In solvent: -80°C for 1 year <small>Actual storage temperature shall be subject to the COA.</small>



## Biological Description

Description	Betanin (Betanine) is a natural red-violet food dye obtained from beets.
Targets(IC50)	Others

## Solubility Information

Solubility	H <sub>2</sub> O: 100 mg/mL (181.66 mM), Sonication is recommended. ( $< 1$ mg/ml refers to the product slightly soluble or insoluble)
------------	---

## Preparing Stock Solutions

	1mg	5mg	10mg
1 mM	1.8166 mL	9.0831 mL	18.1663 mL
5 mM	0.3633 mL	1.8166 mL	3.6333 mL
10 mM	0.1817 mL	0.9083 mL	1.8166 mL
50 mM	0.0363 mL	0.1817 mL	0.3633 mL

Please select the appropriate solvent to prepare the stock solution, according to the solubility of the product in different solvents. Please use it as soon as possible.

Note: The dilution table applies only to solid products. For liquid products, please calculate the stock solution based on the stated concentration and/or density.

### Reference

Toth S, et al. The effect of Betanin parenteral pretreatment on Jejunal and pulmonary tissue histological architecture and inflammatory response after Jejunal ischemia-reperfusion injury. *Exp Mol Pathol*. 2019 Aug 1;110:104292.

Motawi TK, et al. Protective effects of betanin against paracetamol and diclofenac induced neurotoxicity and endocrine disruption in rats. *Biomarkers*. 2019 Aug 5:1-7.

Nowacka M, et al. The Impact of Pulsed Electric Field on the Extraction of Bioactive Compounds from Beetroot. *Foods*. 2019 Jul 5;8(7).

Choo KY, et al. Study on bioaccessibility of betacyanins from red dragon fruit (*Hylocereus polyrhizus*). *Food Sci Biotechnol*. 2019 Feb 6;28(4):1163-1169.

**Inhibitor · Natural Compounds · Compound Libraries · Recombinant Proteins**

This product is for Research Use Only · Not for Human or Veterinary or Therapeutic Use

Tel:781-999-4286 E\_mail:info@targetmol.com Address:34 Washington Street,Wellesley Hills,MA 02481