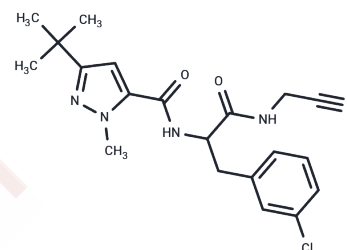


Cathepsin Inhibitor 1

Chemical Properties

CAS No. : 225120-65-0
 Formula: C₂₀H₂₄ClN₅O₂
 Molecular Weight: 401.89
 Storage: Powder: -20°C for 3 years | In solvent: -80°C for 1 year
Actual storage temperature shall be subject to the COA.



Biological Description

Description	Cathepsin Inhibitor 1 is an inhibitor of Cathepsin (L, L2, S, K, B) with pIC ₅₀ of 7.9, 6.7, 6.0, 5.5 and 5.2, respectively.
Targets(IC ₅₀)	Cysteine Protease
In vivo	Ciproxifan intravenously injected at dose of 1 mg/kg decreases the H ₃ -receptor ligand concentration in serum in Male Swiss mice, with half-times of distribution phase of 13min and elimination phase of 87 min, respectively. Ciproxifan (1 mg/kg, p.o.) rises brain t-MeHA level rapidly in Male Swiss mice, being already significantly increased after 30 min, reaching a plateau between 90 and 180 min and still remaining enhanced after 270 min. Ciproxifan leads to ED ₅₀ values of 0.23 mg/kg in cerebral cortex, 0.28 mg/kg in striatum and 0.30 mg/kg in hypothalamus in Male Wistar rats. Ciproxifan (3 mg/kg, i.p.) significantly increases choice accuracy as evaluated in the five-choice task performed using a short stimulus duration. Ciproxifan (0.15-2 mg/kg, p.o.) induces marked signs of neocortical electroencephalogram activation manifested by enhanced fast-rhythms density and an almost total waking state in cats. [1] Ciproxifan (10 mg/kg i. p.) enhances prepulse inhibition in the DBA/2 strain mice. [3] Ciproxifan (3 mg/kg i.p.) alleviates hyperactivity and cognitive deficits in the APP Tg2576 mouse model of Alzheimer's disease. [4] Ciproxifan (3 mg/kg i.p.) improves accuracy and decreased impulsivity in adult male hooded Lister rats. [5]

Solubility Information

Solubility	DMSO: 74 mg/mL (184.13 mM),Sonication is recommended. Ethanol: 47 mg/mL (116.95 mM),Sonication is recommended. H ₂ O: < 1 mg/mL (insoluble or slightly soluble), (< 1 mg/ml refers to the product slightly soluble or insoluble)
------------	--

Preparing Stock Solutions

	1mg	5mg	10mg
1 mM	2.4882 mL	12.4412 mL	24.8824 mL
5 mM	0.4976 mL	2.4882 mL	4.9765 mL
10 mM	0.2488 mL	1.2441 mL	2.4882 mL
50 mM	0.0498 mL	0.2488 mL	0.4976 mL

Please select the appropriate solvent to prepare the stock solution, according to the solubility of the product in different solvents. Please use it as soon as possible.

Note: The dilution table applies only to solid products. For liquid products, please calculate the stock solution based on the stated concentration and/or density.

Reference

Asaad N, et al. Bioorg Med Chem Lett, 2009, 19(15), 4280-4283.

Inhibitor · Natural Compounds · Compound Libraries · Recombinant Proteins

This product is for Research Use Only · Not for Human or Veterinary or Therapeutic Use

Tel:781-999-4286 E_mail:info@targetmol.com Address:34 Washington Street,Wellesley Hills,MA 02481