

EHT-6706

Chemical Properties

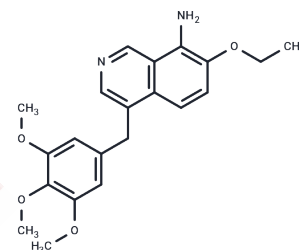
CAS No. : 1351592-10-3

Formula: C₂₁H₂₄N₂O₄

Molecular Weight: 368.43

Storage: Powder: -20°C for 3 years | In solvent: -80°C for 1 year

Actual storage temperature shall be subject to the COA.



Biological Description

Description	EHT-6706 is a novel microtubule-disrupting agent that targets the colchicine-binding site to inhibit tubulin polymerization. At low nM concentrations, EHT 6706 exhibits highly potent antiproliferative activity on more than 60 human tumor cell lines, even those described as being drug resistant. EHT 6706 also shows strong efficacy as a vascular-disrupting agent, since it prevents endothelial cell tube formation and disrupts pre-established vessels, changes the permeability of endothelial cell monolayers and inhibits endothelial cell migration. Genome-wide transcriptomic analysis of EHT 6706 effects on human endothelial cells shows that the antiangiogenic activity elicits gene deregulations of antiangiogenic pathways. These findings indicate that EHT 6706 is a promising tubulin-binding compound with potentially broad clinical antitumor efficacy.
Targets(IC50)	Others

Preparing Stock Solutions

	1mg	5mg	10mg
1 mM	2.7142 mL	13.5711 mL	27.1422 mL
5 mM	0.5428 mL	2.7142 mL	5.4284 mL
10 mM	0.2714 mL	1.3571 mL	2.7142 mL
50 mM	0.0543 mL	0.2714 mL	0.5428 mL

Please select the appropriate solvent to prepare the stock solution, according to the solubility of the product in different solvents. Please use it as soon as possible.

Note: The dilution table applies only to solid products. For liquid products, please calculate the stock solution based on the stated concentration and/or density.

Inhibitor · Natural Compounds · Compound Libraries · Recombinant Proteins

This product is for Research Use Only · Not for Human or Veterinary or Therapeutic Use

Tel:781-999-4286

E_mail:info@targetmol.com

Address:34 Washington Street,Wellesley Hills,MA 02481