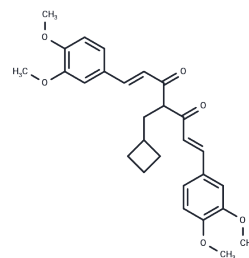


Rosolutamide

Chemical Properties

CAS No. :	1039760-91-2
Formula:	C ₂₈ H ₃₂ O ₆
Molecular Weight:	464.55
Storage:	Store at low temperature Powder: -20°C for 3 years In solvent: -80°C for 1 year <small>Actual storage temperature shall be subject to the COA.</small>



Biological Description

Description	Rosolutamide (ALZ-003) is a curcumin analog, an orally active Nrf1 and Nrf2 activator. Rosolutamide modulates oxidative homeostasis, improves mitochondrial function and promotes autophagy, reduces mutant protein aggregation, and decreases intracellular/mitochondrial reactive oxygen species (ROS) levels. Rosolutamide has been used in the study of neurodegeneration such as spinal cerebellar ataxia and Huntington disease. neurodegenerative diseases such as Huntington's disease. Regulates oxidative homeostasis.
Targets(IC50)	Mitophagy, HSP, Androgen Receptor, Nrf2

Solubility Information

Solubility	DMSO: 27 mg/mL (58.12 mM), Sonication is recommended. (< 1 mg/ml refers to the product slightly soluble or insoluble)
------------	--

Preparing Stock Solutions

	1mg	5mg	10mg
1 mM	2.1526 mL	10.7631 mL	21.5262 mL
5 mM	0.4305 mL	2.1526 mL	4.3052 mL
10 mM	0.2153 mL	1.0763 mL	2.1526 mL
50 mM	0.0431 mL	0.2153 mL	0.4305 mL

Please select the appropriate solvent to prepare the stock solution, according to the solubility of the product in different solvents. Please use it as soon as possible.

Note: The dilution table applies only to solid products. For liquid products, please calculate the stock solution based on the stated concentration and/or density.

Reference

Bott LC, et al. A small-molecule Nrf1 and Nrf2 activator mitigates polyglutamine toxicity in spinal and bulbar muscular atrophy. *Hum Mol Genet.* 2016 May 15;25(10):1979-1989.

Wu YL, et al. In Vitro Efficacy and Molecular Mechanism of Curcumin Analog in Pathological Regulation of Spinocerebellar Ataxia Type 3. *Antioxidants (Basel).* 2022 Jul 18;11(7):1389.

Inhibitor · Natural Compounds · Compound Libraries · Recombinant Proteins

This product is for Research Use Only · Not for Human or Veterinary or Therapeutic Use

Tel:781-999-4286 E_mail:info@targetmol.com Address:34 Washington Street,Wellesley Hills,MA 02481