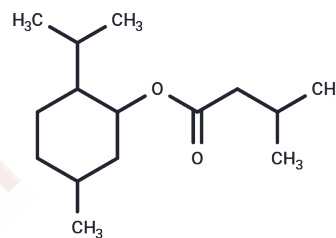


## Menthyl isovalerate

## Chemical Properties

CAS No. :	16409-46-4
Formula:	C <sub>15</sub> H <sub>28</sub> O <sub>2</sub>
Molecular Weight:	240.38
Storage:	Keep away from moisture Powder: -20°C for 3 years   In solvent: -80°C for 1 year <small>Actual storage temperature shall be subject to the COA.</small>



## Biological Description

Description	Menthyl isovalerate is a bioactive chemical.
Targets(IC50)	Others

## Solubility Information

Solubility	DMSO: 55 mg/mL (228.8 mM),Sonication is recommended. (< 1 mg/ml refers to the product slightly soluble or insoluble)
------------	---

## Preparing Stock Solutions

	1mg	5mg	10mg
1 mM	4.1601 mL	20.8004 mL	41.6008 mL
5 mM	0.832 mL	4.1601 mL	8.3202 mL
10 mM	0.416 mL	2.080 mL	4.1601 mL
50 mM	0.0832 mL	0.416 mL	0.832 mL

Please select the appropriate solvent to prepare the stock solution, according to the solubility of the product in different solvents. Please use it as soon as possible.

Note: The dilution table applies only to solid products. For liquid products, please calculate the stock solution based on the stated concentration and/or density.

Inhibitor · Natural Compounds · Compound Libraries · Recombinant Proteins

This product is for Research Use Only · Not for Human or Veterinary or Therapeutic Use

Tel:781-999-4286 E\_mail:info@targetmol.com Address:34 Washington Street,Wellesley Hills,MA 02481