

Clorophene

Chemical Properties

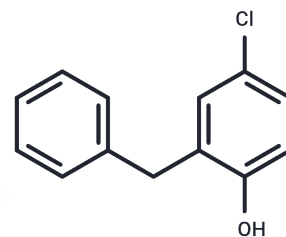
CAS No. : 120-32-1

Formula: C₁₃H₁₁ClO

Molecular Weight: 218.68

Storage: Powder: -20°C for 3 years | In solvent: -80°C for 1 year

Actual storage temperature shall be subject to the COA.



Biological Description

Description	Clorophene (Clorofene) is an antimicrobial agent and can be used in personal care products.
Targets(IC50)	Antibacterial

Solubility Information

Solubility	DMSO: 45 mg/mL (205.78 mM), Sonication is recommended. (< 1 mg/ml refers to the product slightly soluble or insoluble)
------------	---

Preparing Stock Solutions

	1mg	5mg	10mg
1 mM	4.5729 mL	22.8645 mL	45.7289 mL
5 mM	0.9146 mL	4.5729 mL	9.1458 mL
10 mM	0.4573 mL	2.2864 mL	4.5729 mL
50 mM	0.0915 mL	0.4573 mL	0.9146 mL

Please select the appropriate solvent to prepare the stock solution, according to the solubility of the product in different solvents. Please use it as soon as possible.

Note: The dilution table applies only to solid products. For liquid products, please calculate the stock solution based on the stated concentration and/or density.

Reference

Cuderman P, Heath E. Determination of UV filters and antimicrobial agents in environmental water samples. *Anal Bioanal Chem.* 2007 Feb;387(4):1343-50.

Boyd GR, et al. Pharmaceuticals and personal care products (PPCPs) and endocrine disrupting chemicals (EDCs) in stormwater canals and Bayou St. John in New Orleans, Louisiana, USA. *Sci Total Environ.* 2004 Oct 15;333(1-3):137-48.

Houtman CJ, et al. Identification of estrogenic compounds in fish bile using bioassay-directed fractionation. *Environ Sci Technol.* 2004 Dec 1;38(23):6415-23.

Boyd GR, et al. Pharmaceuticals and personal care products (PPCPs) in surface and treated waters of Louisiana, USA and Ontario, Canada. *Sci Total Environ.* 2003 Jul 20;311(1-3):135-49.

Inhibitor · Natural Compounds · Compound Libraries · Recombinant Proteins

This product is for Research Use Only· Not for Human or Veterinary or Therapeutic Use

Tel:781-999-4286 E_mail:info@targetmol.com Address:34 Washington Street,Wellesley Hills,MA 02481