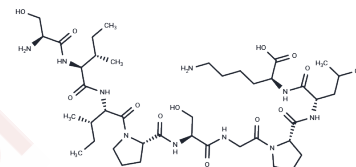


CEF3

## Chemical Properties

CAS No. : 199727-62-3  
 Formula: C42H74N10O12  
 Molecular Weight: 911.1  
 Storage: Keep away from moisture  
 Powder: -20°C for 3 years | In solvent: -80°C for 1 year  
 Actual storage temperature shall be subject to the COA.



## Biological Description

|               |  |
|---------------|--|
| Description   | CEF3 (SIIPSGPLK) is a peptide representing amino acids 13-21 of the M1 protein in the influenza A virus. The M1 protein is a versatile component of the influenza A virus, carrying out crucial structural and functional tasks throughout the virus's life cycle. |
| Targets(IC50) | Influenza Virus  |

## Preparing Stock Solutions

|       | 1mg       | 5mg       | 10mg       |
|-------|-----------|-----------|------------|
| 1 mM  | 1.0976 mL | 5.4879 mL | 10.9757 mL |
| 5 mM  | 0.2195 mL | 1.0976 mL | 2.1951 mL  |
| 10 mM | 0.1098 mL | 0.5488 mL | 1.0976 mL  |
| 50 mM | 0.022 mL  | 0.1098 mL | 0.2195 mL  |

Please select the appropriate solvent to prepare the stock solution, according to the solubility of the product in different solvents. Please use it as soon as possible.

Note: The dilution table applies only to solid products. For liquid products, please calculate the stock solution based on the stated concentration and/or density.

## Reference

Noton SL, et al. Identification of the domains of the influenza A virus M1 matrix protein required for NP binding, oligomerization and incorporation into virions. J Gen Virol. 2007 Aug;88(Pt 8):2280-90.

Inhibitor · Natural Compounds · Compound Libraries · Recombinant Proteins

This product is for Research Use Only · Not for Human or Veterinary or Therapeutic Use

Tel:781-999-4286 E\_mail:info@targetmol.com Address:34 Washington Street,Wellesley Hills,MA 02481