

(-)-Inpea HCl

Chemical Properties

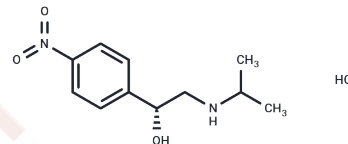
CAS No. : 7388-03-6

Formula: C₁₁H₁₇ClN₂O₃

Molecular Weight: 260.72

Storage: Powder: -20°C for 3 years | In solvent: -80°C for 1 year

Actual storage temperature shall be subject to the COA.



Biological Description

Description	(-)-Inpea HCl is a bioactive chemical.
Targets(IC50)	Others

Preparing Stock Solutions

	1mg	5mg	10mg
1 mM	3.8355 mL	19.1777 mL	38.3553 mL
5 mM	0.7671 mL	3.8355 mL	7.6711 mL
10 mM	0.3836 mL	1.9178 mL	3.8355 mL
50 mM	0.0767 mL	0.3836 mL	0.7671 mL

Please select the appropriate solvent to prepare the stock solution, according to the solubility of the product in different solvents. Please use it as soon as possible.

Note: The dilution table applies only to solid products. For liquid products, please calculate the stock solution based on the stated concentration and/or density.

Reference

Dorfmueller P, Günther S, Ghigna MR, Thomas de Montpréville V, Boulate D, Paul JF, Jaïs X, Decante B, Simonneau G, Dartevelle P, Humbert M, Fadel E, Mercier O. Microvascular disease in chronic thromboembolic pulmonary hypertension: a role for pulmonary veins and systemic vasculature. *Eur Respir J*. 2014 Nov;44(5):1275-88. doi: 10.1183/09031936.00169113. Epub 2014 Aug 19. PubMed PMID: 25142477.

Lowenstein A. Elder abuse and neglect--"old phenomenon": new directions for research, legislation, and service developments. (2008 Rosalie S. Wolf Memorial Elder Abuse Prevention Award--International Category Lecture). *J Elder Abuse Negl*. 2009 Jul-Sep;21(3):278-87. doi: 10.1080/08946560902997637. PubMed PMID: 19827329.

Lemmens-Gruber R, Zilberszac A, Heistracher P. Arrhythmogenic effect of beta-adrenoceptor-blocking drugs in Purkinje fibres of guinea-pig hearts. *Arch Int Pharmacodyn Ther*. 1996 Jan-Feb;331(1):46-58. PubMed PMID: 8896710.

Ragazzi E, Frolidi G, Fassina G. Resveratrol activity on guinea pig isolated trachea from normal and albumin-sensitized animals. *Pharmacol Res Commun*. 1988 Dec;20 Suppl 5:79-82. PubMed PMID: 2907791.

Inhibitor · Natural Compounds · Compound Libraries · Recombinant Proteins

This product is for Research Use Only · Not for Human or Veterinary or Therapeutic Use

Tel:781-999-4286 E_mail:info@targetmol.com Address:34 Washington Street,Wellesley Hills,MA 02481