

L 651580

Chemical Properties

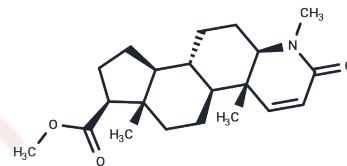
CAS No. : 103335-44-0

Formula: C₂₁H₃₁N₃O₃

Molecular Weight: 345.48

Storage: Powder: -20°C for 3 years | In solvent: -80°C for 1 year

Actual storage temperature shall be subject to the COA.



Biological Description

Description	L 651580 is a bioactive chemical.
Targets(IC50)	Others

Preparing Stock Solutions

	1mg	5mg	10mg
1 mM	2.8945 mL	14.4726 mL	28.9452 mL
5 mM	0.5789 mL	2.8945 mL	5.789 mL
10 mM	0.2895 mL	1.4473 mL	2.8945 mL
50 mM	0.0579 mL	0.2895 mL	0.5789 mL

Please select the appropriate solvent to prepare the stock solution, according to the solubility of the product in different solvents. Please use it as soon as possible.

Note: The dilution table applies only to solid products. For liquid products, please calculate the stock solution based on the stated concentration and/or density.

Reference

Lu Q, Chen WY, Zhu ZY, Chen J, Xu YC, Kaewpet M, Rukachaisirikul V, Chen LL, Shen X. L655,240, acting as a competitive BACE1 inhibitor, efficiently decreases β -amyloid peptide production in HEK293-APPswe cells. *Acta Pharmacol Sin.* 2012 Dec;33(12):1459-68. doi: 10.1038/aps.2012.74. Epub 2012 Jul 30. PubMed PMID: 22842730; PubMed Central PMCID: PMC4001842.

Weinberg ML, Moreira E, Weinberg J. Arachidonic acid products-mediated contraction induced by bradykinin in relaxed mesenteric arterial rings from Holtzman rats. *Eur J Pharmacol.* 1997 Feb 12;320(2-3):145-50. PubMed PMID: 9059847.

Campos AH, Calixto JB. Mechanisms involved in the contractile responses of kinins in rat portal vein rings: mediation by B1 and B2 receptors. *J Pharmacol Exp Ther.* 1994 Feb;268(2):902-9. PubMed PMID: 8114004.

Tardif M, Bergeron Y, Beauchamp D, Bergeron MG. Increased renal uptake of gentamicin in endotoxemic rats receiving concomitant thromboxane A2 antagonist therapy. *Antimicrob Agents Chemother.* 1993 Dec;37(12):2727-32. PubMed PMID: 8109943; PubMed Central PMCID: PMC192792.

Inhibitor · Natural Compounds · Compound Libraries · Recombinant Proteins

This product is for Research Use Only · Not for Human or Veterinary or Therapeutic Use

Tel:781-999-4286 E_mail:info@targetmol.com Address:34 Washington Street,Wellesley Hills,MA 02481