

## Demethylwedelolactone Sulfate

## Chemical Properties

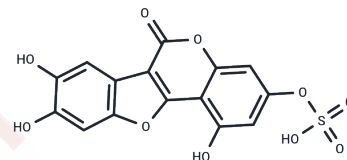
CAS No. : 1318240-80-0

Formula: C<sub>15</sub>H<sub>8</sub>O<sub>10</sub>S

Molecular Weight: 380.28

Storage: Powder: -20°C for 3 years | In solvent: -80°C for 1 year

Actual storage temperature shall be subject to the COA.



## Biological Description

Description	Demethylwedelolactone Sulfate (Demethylwedelolactone 3-sulfate) is a coumestan compound isolated from <i>Eclipta prostrata</i> L.
Targets(IC50)	Others

## Preparing Stock Solutions

	1mg	5mg	10mg
1 mM	2.6296 mL	13.1482 mL	26.2964 mL
5 mM	0.5259 mL	2.6296 mL	5.2593 mL
10 mM	0.263 mL	1.3148 mL	2.6296 mL
50 mM	0.0526 mL	0.263 mL	0.5259 mL

Please select the appropriate solvent to prepare the stock solution, according to the solubility of the product in different solvents. Please use it as soon as possible.

Note: The dilution table applies only to solid products. For liquid products, please calculate the stock solution based on the stated concentration and/or density.

## Reference

Chao-Feng Zhang, et al. Sulphur compounds from the aerial parts of *Eclipta prostrata*. *Biochemical Systematics and Ecology*. (2010);38(6):1253-1256.

Inhibitor · Natural Compounds · Compound Libraries · Recombinant Proteins

This product is for Research Use Only · Not for Human or Veterinary or Therapeutic Use

Tel:781-999-4286 E\_mail:info@targetmol.com Address:34 Washington Street,Wellesley Hills,MA 02481