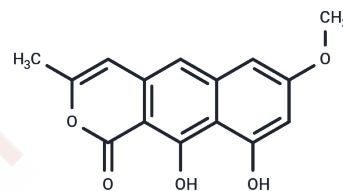


## toralactone

## Chemical Properties

CAS No. :	41743-74-2
Formula:	C <sub>15</sub> H <sub>12</sub> O <sub>5</sub>
Molecular Weight:	272.25
Storage:	Keep away from moisture Powder: -20°C for 3 years   In solvent: -80°C for 1 year <small>Actual storage temperature shall be subject to the COA.</small>



## Biological Description

Description	Toralactone is isolated from cassia seed and shows antibacterial activity against methicillin-resistant Staphylococcus aureus.
Targets(IC50)	Nrf2,Antibacterial
In vitro	Rubrofusarin and toralactone can enhance the cytotoxic profile of P-gp substrates, such as PTX, via inhibiting P-gp efflux activity and enhancing the intracellular entrapment of P-gp substrates. Toralactone sensitize resistant MCF-7adr cell line to paclitaxel via inhibiting P-glycoprotein efflux activity[1].

## Solubility Information

Solubility	DMSO: 2.73 mg/mL (10.03 mM),Sonication is recommended. (< 1 mg/ml refers to the product slightly soluble or insoluble)
------------	---

## Preparing Stock Solutions

	1mg	5mg	10mg
1 mM	3.6731 mL	18.3655 mL	36.7309 mL
5 mM	0.7346 mL	3.6731 mL	7.3462 mL
10 mM	0.3673 mL	1.8365 mL	3.6731 mL
50 mM	0.0735 mL	0.3673 mL	0.7346 mL

Please select the appropriate solvent to prepare the stock solution, according to the solubility of the product in different solvents. Please use it as soon as possible.

Note: The dilution table applies only to solid products. For liquid products, please calculate the stock solution based on the stated concentration and/or density.

Reference

YongtaekSeo, et al. Toralactone glycoside in Cassia obtusifolia mediates hepatoprotection via an Nrf2-dependent anti-oxidative mechanism. Food Research International. Volume 97, July 2017, Pages 340-346.

Salwa D. Alqahtani, et al. Abstract 1205: Rubrofusarin and toralactone sensitize resistant MCF-7adr cell line to paclitaxel via inhibiting P-glycoprotein efflux activity. AACR Annual Meeting 2017; April 1-5, 2017; Washington, DC.

**Inhibitor · Natural Compounds · Compound Libraries · Recombinant Proteins**

This product is for Research Use Only· Not for Human or Veterinary or Therapeutic Use

Tel:781-999-4286 E\_mail:info@targetmol.com Address:34 Washington Street,Wellesley Hills,MA 02481