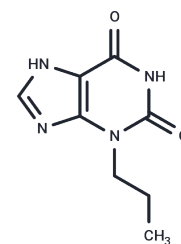


Enprofylline

Chemical Properties

CAS No. :	41078-02-8
Formula:	C ₈ H ₁₀ N ₄ O ₂
Molecular Weight:	194.19
Storage:	Powder: -20°C for 3 years In solvent: -80°C for 1 year Actual storage temperature shall be subject to the COA.



Biological Description

Description	Enprofylline (Enprofilina), a bronchodilator, acts primarily as a competitive nonselective phosphodiesterase inhibitor. Enprofylline is used in asthma, chronic obstructive pulmonary disease, and in the management of sickle cell disease, diabetic neuropathy, and cerebrovascular insufficiency.
Targets(IC50)	Others, Adenosine Receptor, PDE

Solubility Information

Solubility	H ₂ O: Insoluble, DMSO: 60 mg/mL (308.98 mM), Sonication is recommended. (< 1 mg/ml refers to the product slightly soluble or insoluble)
------------	---

Preparing Stock Solutions

	1mg	5mg	10mg
1 mM	5.1496 mL	25.748 mL	51.496 mL
5 mM	1.0299 mL	5.1496 mL	10.2992 mL
10 mM	0.515 mL	2.5748 mL	5.1496 mL
50 mM	0.103 mL	0.515 mL	1.0299 mL

Please select the appropriate solvent to prepare the stock solution, according to the solubility of the product in different solvents. Please use it as soon as possible.

Note: The dilution table applies only to solid products. For liquid products, please calculate the stock solution based on the stated concentration and/or density.

Reference

Mojsilovic-Petrovic J, Arneja A, Kalb RG. Enprofylline protects motor neurons from in vitro excitotoxic challenge. *Neurodegener Dis.* 2005;2(3-4):160-5.

Feoktistov I, Biaggioni I. Adenosine A2b receptors evoke interleukin-8 secretion in human mast cells. An enprofylline-sensitive mechanism with implications for asthma. *J Clin Invest.* 1995 Oct;96(4):1979-86. PubMed PMID: 7560091; PubMed Central PMCID: PMC185836.

Chapman KR, Ljungholm K, Kallen A. Long-term xanthine therapy of asthma. Enprofylline and theophylline compared. International Enprofylline Study Group. *Chest.* 1994 Nov;106(5):1407-1 PubMed PMID: 7956392.

Nadai M, Hasegawa T, Wang L, Tagaya O, Nabeshima T. Alterations in the pharmacokinetics and protein binding of enprofylline in Eisai hyperbilirubinemic rats. *Drug Metab Dispos.* 1994 Jul-Aug;22(4):561-PubMed PMID: 7956730.

Inhibitor · Natural Compounds · Compound Libraries · Recombinant Proteins

This product is for Research Use Only · Not for Human or Veterinary or Therapeutic Use

Tel:781-999-4286 E_mail:info@targetmol.com Address:34 Washington Street,Wellesley Hills,MA 02481