

CLIP 86-100 acetate(648881-58-7 free base)

Chemical Properties

CAS No. :

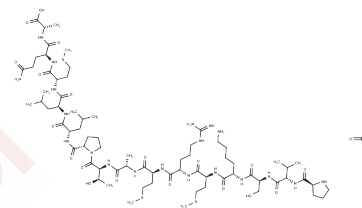
Formula: C74H132N20O21S3

Molecular Weight: 1734.17

Keep away from moisture

Storage: Powder: -20°C for 3 years | In solvent: -80°C for 1 year

Actual storage temperature shall be subject to the COA.



Biological Description

Description	CLIP 86-100 acetate(648881-58-7 free base) is amino acids 86 to 100 fragment of class II-associated invariant chain peptide called CLIP. The major histocompatibility complex class II molecule displays peptide fragments of foreign proteins to trigger a defensive reaction from the immune system. Before insertion of the foreign peptides into the binding groove, a place-holding peptide CLIP is removed. CLIP 86-100 acetate(648881-58-7 free base) is accomplished by the molecule DM, which is shown to increase the dissociation rate of a CLIP peptide from class II.
Targets(IC50)	Others

Solubility Information

Solubility	DMSO: 5 mM, Sonication is recommended. (< 1 mg/ml refers to the product slightly soluble or insoluble)
------------	---

Preparing Stock Solutions

	1mg	5mg	10mg
1 mM	0.5766 mL	2.8832 mL	5.7664 mL
5 mM	0.1153 mL	0.5766 mL	1.1533 mL
10 mM	0.0577 mL	0.2883 mL	0.5766 mL
50 mM	0.0115 mL	0.0577 mL	0.1153 mL

Please select the appropriate solvent to prepare the stock solution, according to the solubility of the product in different solvents. Please use it as soon as possible.

Note: The dilution table applies only to solid products. For liquid products, please calculate the stock solution based on the stated concentration and/or density.

Reference

van Luijn MM, et al. Class II-associated invariant chain peptide as predictive immune marker in minimal residual disease in acute myeloid leukemia. *Oncoimmunology*. 2015 Jan 7;3(12):e941737. eCollection 2014 Dec.

Inhibitor · Natural Compounds · Compound Libraries · Recombinant Proteins

This product is for Research Use Only · Not for Human or Veterinary or Therapeutic Use

Tel:781-999-4286 E_mail:info@targetmol.com Address:34 Washington Street,Wellesley Hills,MA 02481