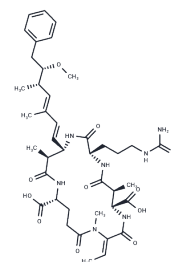


Nodularin

Chemical Properties

CAS No. :	118399-22-7
Formula:	C ₄₁ H ₆₀ N ₈ O ₁₀
Molecular Weight:	824.977
Storage:	Keep away from moisture Powder: -20°C for 3 years In solvent: -80°C for 1 year <small>Actual storage temperature shall be subject to the COA.</small>



Biological Description

Description	The cyanobacterium <i>Nodularia spumigena</i> often contaminates the drinking water of rural communities in developing countries and accumulates in mussels, flounder, and cod from the northern Baltic Sea. Nodularin is a hepatotoxic monocyclic pentapeptide produced by the <i>N. spumigena</i> . It is a potent inhibitor of protein phosphatase types 1 (PP1) and 2A (PP2A), exhibiting IC ₅₀ values of 1.8 and 0.026 nM, respectively. PP2B is inhibited to a lesser extent with an IC ₅₀ of 1.8 μM. No apparent inhibitory effect is observed with PP2C, alkaline phosphatase, acid phosphatase, insulin receptor tyrosine kinase, protein kinase A, phosphorylase kinase, or protein kinase C.
Targets(IC ₅₀)	Others,Phosphatase

Solubility Information

Solubility	Ethanol: 10 mg/mL (12.12 mM),Sonication is recommended. Methanol:H ₂ O (1:1): 1 mg/mL (1.21 mM),Sonication is recommended. DMSO: 10 mg/mL (12.12 mM),Sonication is recommended. (< 1 mg/ml refers to the product slightly soluble or insoluble)
------------	---

Preparing Stock Solutions

	1mg	5mg	10mg
1 mM	1.2122 mL	6.0608 mL	12.1215 mL
5 mM	0.2424 mL	1.2122 mL	2.4243 mL
10 mM	0.1212 mL	0.6061 mL	1.2122 mL
50 mM	0.0242 mL	0.1212 mL	0.2424 mL

Please select the appropriate solvent to prepare the stock solution, according to the solubility of the product in different solvents. Please use it as soon as possible.

Note: The dilution table applies only to solid products. For liquid products, please calculate the stock solution based on the stated concentration and/or density.

Inhibitor · Natural Compounds · Compound Libraries · Recombinant Proteins

This product is for Research Use Only · Not for Human or Veterinary or Therapeutic Use

Tel:781-999-4286 E_mail:info@targetmol.com Address:34 Washington Street,Wellesley Hills,MA 02481