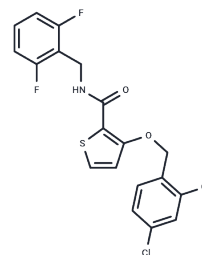


AS1938909

Chemical Properties

CAS No. : 1243155-40-9
 Formula: C₁₉H₁₃Cl₂F₂N₂O₂S
 Molecular Weight: 428.28
 Storage: Powder: -20°C for 3 years | In solvent: -80°C for 1 year
 Actual storage temperature shall be subject to the COA.



Biological Description

| | |
|---------------|--|
| Description | AS1938909 is a SHIP2 inhibitor that works by increasing Akt phosphorylation, glucose consumption, and glucose uptake in L6 myotubes, specifically upregulating the GLUT1 gene. |
| Targets(IC50) | Others,Akt,Phosphatase,transporter |

Preparing Stock Solutions

| | 1mg | 5mg | 10mg |
|-------|-----------|------------|------------|
| 1 mM | 2.3349 mL | 11.6746 mL | 23.3492 mL |
| 5 mM | 0.467 mL | 2.3349 mL | 4.6698 mL |
| 10 mM | 0.2335 mL | 1.1675 mL | 2.3349 mL |
| 50 mM | 0.0467 mL | 0.2335 mL | 0.467 mL |

Please select the appropriate solvent to prepare the stock solution, according to the solubility of the product in different solvents. Please use it as soon as possible.

Note: The dilution table applies only to solid products. For liquid products, please calculate the stock solution based on the stated concentration and/or density.

Reference

Suwa A, Kurama T, Yamamoto T, Sawada A, Shimokawa T, Aramori I. Glucose metabolism activation by SHIP2 inhibitors via up-regulation of GLUT1 gene in L6 myotubes. *Eur J Pharmacol.* 2010 Sep 10;642(1-3):177-82. doi: 10.1016/j.ejphar.2010.06.002. Epub 2010 Jun 17. PubMed PMID: 20558154.

Inhibitor · Natural Compounds · Compound Libraries · Recombinant Proteins

This product is for Research Use Only. Not for Human or Veterinary or Therapeutic Use

Tel:781-999-4286 E_mail:info@targetmol.com Address:34 Washington Street,Wellesley Hills,MA 02481