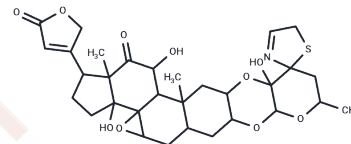


Labriformine

Chemical Properties

CAS No. :	66419-07-6
Formula:	C ₃₁ H ₃₉ N ₁ O ₁₀ S
Molecular Weight:	617.71
Storage:	Powder: -20°C for 3 years In solvent: -80°C for 1 year Actual storage temperature shall be subject to the COA.



Biological Description

Description	Labriformine is a nitrogen-containing cardenolide of low polarity, predominated in the latices.
Targets(IC50)	Others

Preparing Stock Solutions

	1mg	5mg	10mg
1 mM	1.6189 mL	8.0944 mL	16.1888 mL
5 mM	0.3238 mL	1.6189 mL	3.2378 mL
10 mM	0.1619 mL	0.8094 mL	1.6189 mL
50 mM	0.0324 mL	0.1619 mL	0.3238 mL

Please select the appropriate solvent to prepare the stock solution, according to the solubility of the product in different solvents. Please use it as soon as possible.

Note: The dilution table applies only to solid products. For liquid products, please calculate the stock solution based on the stated concentration and/or density.

Reference

Brower LP, Seiber JN, Nelson CJ, Lynch SP, Tuskes PM. Plant-determined variation in the cardenolide content, thin-layer chromatography profiles, and emetic potency of monarch butterflies, *Danaus plexippus* reared on the milkweed, *Asclepias eriocarpa* in California. *J Chem Ecol.* 1982 Mar;8(3):579-633. doi: 10.1007/BF00989631. PubMed PMID: 24415043.

Nelson CJ, Seiber JN, Brower LP. Seasonal and intraplant variation of cardenolide content in the California milkweed, *Asclepias eriocarpa*, and implications for plant defense. *J Chem Ecol.* 1981 Nov;7(6):981-1010. doi: 10.1007/BF00987622. PubMed PMID: 24420825.

Lynch SP, Martin RA. Cardenolide content and thin-layer chromatography profiles of monarch butterflies, *Danaus plexippus* L., and their larval host-plant milkweed, *Asclepias viridis* Walt., in northwestern Louisiana. *J Chem Ecol.* 1987 Jan;13(1):47-70. doi: 10.1007/BF01020351. PubMed PMID: 24301359.

Malcolm SB, Cockrell BJ, Brower LP. Cardenolide fingerprint of monarch butterflies reared on common milkweed, *Asclepias syriaca* L. *J Chem Ecol.* 1989 Mar;15(3):819-53. doi: 10.1007/BF01015180. PubMed PMID: 24271887.

Inhibitor · Natural Compounds · Compound Libraries · Recombinant Proteins

This product is for Research Use Only · Not for Human or Veterinary or Therapeutic Use

Tel: 781-999-4286 E_mail: info@targetmol.com Address: 34 Washington Street, Wellesley Hills, MA 02481