

SRI-41315

Chemical Properties

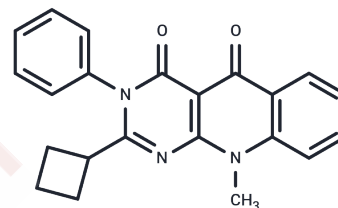
CAS No. : 1613509-49-1

Formula: C₂₂H₁₉N₃O₂

Molecular Weight: 357.41

Storage: Powder: -20°C for 3 years | In solvent: -80°C for 1 year

Actual storage temperature shall be subject to the COA.



Biological Description

Description	SRI-41315 is an eRF1 degrader that acts as a molecular glue at the center of ribosomal decoding. SRI-41315 induces an extended pause at the termination codon and inhibits cystic fibrosis-associated PTC in immortalized and primary human bronchial epithelial cells, restoring CFTR expression and function. SRI-41315 inhibits PTC by decreasing the abundance of the termination factor eRF1 NIOCH 14
Targets(IC50)	CFTR
In vitro	SRI-41315 showed target cytotoxicity (CC50) values above 50 µM in both FRT cells and 16HBE14o- cells.[1] SRI-41315 (5 µM, 20 hr treatment) decreased eRF1 levels via a proteasome-mediated degradation pathway. [1]

Solubility Information

Solubility	DMSO: 8.33 mg/mL (23.31 mM), Sonication is recommended. (< 1 mg/ml refers to the product slightly soluble or insoluble)
------------	--

Preparing Stock Solutions

	1mg	5mg	10mg
1 mM	2.7979 mL	13.9895 mL	27.9791 mL
5 mM	0.5596 mL	2.7979 mL	5.5958 mL
10 mM	0.2798 mL	1.399 mL	2.7979 mL
50 mM	0.056 mL	0.2798 mL	0.5596 mL

Please select the appropriate solvent to prepare the stock solution, according to the solubility of the product in different solvents. Please use it as soon as possible.

Note: The dilution table applies only to solid products. For liquid products, please calculate the stock solution based on the stated concentration and/or density.

Reference

Sharma J, et al. A small molecule that induces translational readthrough of CFTR nonsense mutations by eRF1 depletion. Nat Commun. 2021 Jul 16;12(1):4358.

Inhibitor · Natural Compounds · Compound Libraries · Recombinant Proteins

This product is for Research Use Only · Not for Human or Veterinary or Therapeutic Use

Tel:781-999-4286 E_mail:info@targetmol.com Address:34 Washington Street,Wellesley Hills,MA 02481