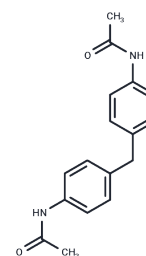


FH1

## Chemical Properties

CAS No. : 2719-05-3  
 Formula: C<sub>17</sub>H<sub>18</sub>N<sub>2</sub>O<sub>2</sub>  
 Molecular Weight: 282.34  
 Storage: Powder: -20°C for 3 years | In solvent: -80°C for 1 year  
 Actual storage temperature shall be subject to the COA.



## Biological Description

Description	FH1 (NSC-12407) (BRD-K4477), a small molecule, enhances the functions of hepatocytes and promotes differentiation hepatocytes derived by iPS.
Targets(IC50)	Others,Reductase
In vivo	Within hepatocytes, FH1(BRD-K4477) facilitates the differentiation of fully-integrated iHeps into a mature state, enhancing cellular functionality.
Kinase Assay	Affinity determination: Binding affinities (K <sub>i</sub> or IC <sub>50</sub> ) of ABT-263 against different isoforms of Bcl-2 family are determined with competitive fluorescence polarization assays. The following peptide probe/protein pairs are used: f-bad (1 nM) and Bcl-xL (6 nM), f-Bax (1 nM) and Bcl-2 (10 nM), f-Bax (1 nM) and Bcl-w (40 nM), f-Noxa (2 nM) and Mcl-1 (40 nM), and f-Bax (1 nM) and Bcl-2-A1 (15 nM). Binding affinities for Bcl-xL are also determined using a time-resolved fluorescence resonance energy transfer assay. Bcl-xL (1 nM, His tagged) is mixed with 200 nM f-Bak, 1 nM Tb-labeled anti-His antibody, and ABT-263 at room temperature for 30 min. Fluorescence is measured on an Envision plate reader using a 340/35 nm excitation filter and 520/525 (f-Bak) and 495/510 nm (Tb-labeled anti-His antibody) emission filters.

## Solubility Information

Solubility	Ethanol: < 1 mg/mL (insoluble or slightly soluble), DMSO: 4.62 mg/mL (16.36 mM),Sonication is recommended. (< 1 mg/ml refers to the product slightly soluble or insoluble)
In vivo Formulation	10% DMSO+40% PEG300+5% Tween 80+45% Saline: 1 mg/mL (3.54 mM),Sonication is recommended. <i>Please add the solvents sequentially, clarifying the solution as much as possible before adding the next one. Dissolve by heating and/or sonication if necessary. Working solution is recommended to be prepared and used immediately. The formulation provided above is for reference purposes only. In vivo formulations may vary and should be modified based on specific experimental conditions.</i>

### Preparing Stock Solutions

---

	<b>1mg</b>	<b>5mg</b>	<b>10mg</b>
1 mM	3.5418 mL	17.7091 mL	35.4183 mL
5 mM	0.7084 mL	3.5418 mL	7.0837 mL
10 mM	0.3542 mL	1.7709 mL	3.5418 mL
50 mM	0.0708 mL	0.3542 mL	0.7084 mL

---

Please select the appropriate solvent to prepare the stock solution, according to the solubility of the product in different solvents. Please use it as soon as possible.

Note: The dilution table applies only to solid products. For liquid products, please calculate the stock solution based on the stated concentration and/or density.

#### Reference

Shan J, et al. Nat Chem Biol. 2013, 9(8), 514-520.

**Inhibitor · Natural Compounds · Compound Libraries · Recombinant Proteins**

This product is for Research Use Only · Not for Human or Veterinary or Therapeutic Use

Tel:781-999-4286 E\_mail:info@targetmol.com Address:34 Washington Street,Wellesley Hills,MA 02481