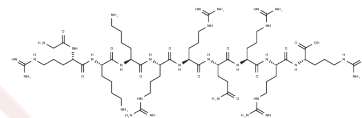


TAT (48-57)

Chemical Properties

CAS No. :	253141-50-3
Formula:	C55H109N31O12
Molecular Weight:	1396.65
Storage:	Keep away from moisture Powder: -20°C for 3 years In solvent: -80°C for 1 year <small>Actual storage temperature shall be subject to the COA.</small>



Biological Description

Description	TAT (48-57) is a classical arginine-rich cell-penetrating peptide (CPP) derived from the HIV-1 TAT protein sequence. It possesses potent receptor-independent membrane permeability, efficiently mediating the cytoplasmic delivery of various macromolecular payloads like proteins and nanodrugs.
Targets(IC50)	Others
In vitro	TAT (48-57) is a cell-permeable peptide with high translocation efficiency and low cytotoxicity, serving as a carrier for macromolecules[1].

Solubility Information

Solubility	DMSO: 40 mg/mL (28.64 mM), Sonication is recommended. H2O: Soluble, (< 1 mg/ml refers to the product slightly soluble or insoluble)
------------	--

Preparing Stock Solutions

	1mg	5mg	10mg
1 mM	0.716 mL	3.580 mL	7.160 mL
5 mM	0.1432 mL	0.716 mL	1.432 mL
10 mM	0.0716 mL	0.358 mL	0.716 mL
50 mM	0.0143 mL	0.0716 mL	0.1432 mL

Please select the appropriate solvent to prepare the stock solution, according to the solubility of the product in different solvents. Please use it as soon as possible.

Note: The dilution table applies only to solid products. For liquid products, please calculate the stock solution based on the stated concentration and/or density.

Reference

Rodriguez DA, et al. Characterization of RIPK3-mediated phosphorylation of the activation loop of MLKL during necroptosis. Cell Death Differ. 2016 Jan;23(1):76-88.

Inhibitor · Natural Compounds · Compound Libraries · Recombinant Proteins

This product is for Research Use Only · Not for Human or Veterinary or Therapeutic Use

Tel:781-999-4286 E_mail:info@targetmol.com Address:34 Washington Street,Wellesley Hills,MA 02481