

## HER2/neu (654-662) GP2 acetate

## Chemical Properties

CAS No. :

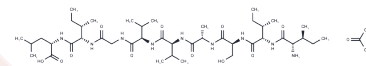
Formula: C44H81N9O13

Molecular Weight: 944.17

Keep away from moisture

Storage: Powder: -20°C for 3 years | In solvent: -80°C for 1 year

Actual storage temperature shall be subject to the COA.



## Biological Description

Description	HER2/neu (654-662) GP2 acetate is derived from the human epidermal growth factor receptor 2 (HER2-Neu, 654-662). HER2/neu (654-662) GP2 acetate induces HLA-A2-restricted cytotoxic T lymphocytes reactive to various epithelial cancers.
Targets(IC50)	HER

## Preparing Stock Solutions

	1mg	5mg	10mg
1 mM	1.0591 mL	5.2957 mL	10.5913 mL
5 mM	0.2118 mL	1.0591 mL	2.1183 mL
10 mM	0.1059 mL	0.5296 mL	1.0591 mL
50 mM	0.0212 mL	0.1059 mL	0.2118 mL

Please select the appropriate solvent to prepare the stock solution, according to the solubility of the product in different solvents. Please use it as soon as possible.

Note: The dilution table applies only to solid products. For liquid products, please calculate the stock solution based on the stated concentration and/or density.

## Reference

Tanaka Y, et al. Modification of the HER2/NEU-derived tumor antigen GP2 improves induction of GP2-reactive cytotoxic T lymphocytes. *Int J Cancer*. 2001 Nov;94(4):540-4.

Sun Y, et al. Observing the temperature dependent transition of the GP2 peptide using terahertz spectroscopy. *PLoS One*. 2012;7(11):e50306.

**Inhibitor · Natural Compounds · Compound Libraries · Recombinant Proteins**

This product is for Research Use Only · Not for Human or Veterinary or Therapeutic Use

Tel:781-999-4286 E\_mail:info@targetmol.com Address:34 Washington Street,Wellesley Hills,MA 02481