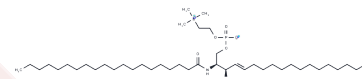


C20 Sphingomyelin (d18:1/20:0)

Chemical Properties

CAS No. :	121999-68-6
Formula:	C43H87N2O6P
Molecular Weight:	759.151
Storage:	Powder: -20°C for 3 years In solvent: -80°C for 1 year Actual storage temperature shall be subject to the COA.



Biological Description

Description	C20 Sphingomyelin is a naturally occurring sphingolipid. Levels of C20 sphingomyelin are upregulated in the hippocampus of rats with diabetes induced by streptozotocin and in human plasma, where it is positively correlated with insulin resistance in obese humans. C20 sphingomyelin is also upregulated in the liver of a mouse model of Niemann-Pick type C1 disease [a neurodegenerative cholesterol-sphingolipid lysosomal storage disorder]. The plasma concentration of C20 sphingomyelin is decreased in men with prostate cancer.
Targets(IC50)	Others,Endogenous Metabolite

Solubility Information

Solubility	Methanol: Soluble Chloroform:Methanol (14:1): Soluble Ethanol: Soluble (< 1 mg/ml refers to the product slightly soluble or insoluble)
------------	--

Preparing Stock Solutions

	1mg	5mg	10mg
1 mM	1.3173 mL	6.5863 mL	13.1726 mL
5 mM	0.2635 mL	1.3173 mL	2.6345 mL
10 mM	0.1317 mL	0.6586 mL	1.3173 mL
50 mM	0.0263 mL	0.1317 mL	0.2635 mL

Please select the appropriate solvent to prepare the stock solution, according to the solubility of the product in different solvents. Please use it as soon as possible.

Note: The dilution table applies only to solid products. For liquid products, please calculate the stock solution based on the stated concentration and/or density.

Inhibitor · Natural Compounds · Compound Libraries · Recombinant Proteins

This product is for Research Use Only · Not for Human or Veterinary or Therapeutic Use

Tel:781-999-4286 E_mail:info@targetmol.com Address:34 Washington Street,Wellesley Hills,MA 02481