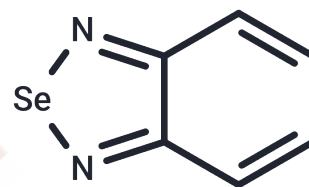


Piaselenole

Chemical Properties

CAS No. :	273-15-4
Formula:	C ₆ H ₄ N ₂ Se
Molecular Weight:	183.07
Storage:	Powder: -20°C for 3 years In solvent: -80°C for 1 year Actual storage temperature shall be subject to the COA.



Biological Description

Description	Piaselenole could determine the traces of selenium.
Targets(IC50)	Others

Solubility Information

Solubility	DMSO: Soluble, (< 1 mg/ml refers to the product slightly soluble or insoluble)
------------	---

Preparing Stock Solutions

	1mg	5mg	10mg
1 mM	5.4624 mL	27.312 mL	54.6239 mL
5 mM	1.0925 mL	5.4624 mL	10.9248 mL
10 mM	0.5462 mL	2.7312 mL	5.4624 mL
50 mM	0.1092 mL	0.5462 mL	1.0925 mL

Please select the appropriate solvent to prepare the stock solution, according to the solubility of the product in different solvents. Please use it as soon as possible.

Note: The dilution table applies only to solid products. For liquid products, please calculate the stock solution based on the stated concentration and/or density.

Reference

Saravanan C, Easwaramoorthi S, Hsiow CY, Wang K, Hayashi M, Wang L. Benzosenadiazole fluorescent probes--near-IR optical and ratiometric fluorescence sensor for fluoride ion. *Org Lett.* 2014 Jan 17;16(2):354-7. doi: 10.1021/ol403082p. Epub 2013 Dec 30. PubMed PMID: 24377949.

Wang W, Li L, Liu S, Ma C, Zhang S. Determination of physiological thiols by electrochemical detection with piaselenole and its application in rat breast cancer cells 4T-1. *J Am Chem Soc.* 2008 Aug 20;130(33):10846-7. doi: 10.1021/ja802273p. Epub 2008 Jul 25. PubMed PMID: 18652464.

Inhibitor · Natural Compounds · Compound Libraries · Recombinant Proteins

This product is for Research Use Only · Not for Human or Veterinary or Therapeutic Use

Tel:781-999-4286 E_mail:info@targetmol.com Address:34 Washington Street,Wellesley Hills,MA 02481