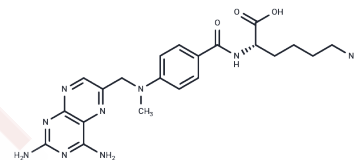


## Lysine-methotrexate

## Chemical Properties

CAS No. :	80407-56-3
Formula:	C <sub>21</sub> H <sub>27</sub> N <sub>9</sub> O <sub>3</sub>
Molecular Weight:	453.5
Storage:	Powder: -20°C for 3 years   In solvent: -80°C for 1 year Actual storage temperature shall be subject to the COA.



## Biological Description

Description	Lysine-methotrexate is an anticancer drug. It is an inhibitor of dihydrofolate reductase.
Targets(IC50)	Others,Antifolate

## Preparing Stock Solutions

	1mg	5mg	10mg
1 mM	2.2051 mL	11.0254 mL	22.0507 mL
5 mM	0.441 mL	2.2051 mL	4.4101 mL
10 mM	0.2205 mL	1.1025 mL	2.2051 mL
50 mM	0.0441 mL	0.2205 mL	0.441 mL

Please select the appropriate solvent to prepare the stock solution, according to the solubility of the product in different solvents. Please use it as soon as possible.

Note: The dilution table applies only to solid products. For liquid products, please calculate the stock solution based on the stated concentration and/or density.

## Reference

- Singh VK, Subudhi BB. Development and characterization of lysine-methotrexate conjugate for enhanced brain delivery. *Drug Deliv.* 2016 Sep;23(7):2327-2337. Epub 2014 Dec 5. PubMed PMID: 25475953.
- Díaz E, Köhidai L, Ríos A, Vanegas O, Silva A, Szabó R, Mező G, Hudecz F, Ponte-Sucre A. Leishmania braziliensis: cytotoxic, cytostatic and chemotactic effects of poly-lysine-methotrexate-conjugates. *Exp Parasitol.* 2013 Sep;135(1):134-41. doi: 10.1016/j.exppara.2013.06.007. Epub 2013 Jun 28. PubMed PMID: 23816643.
- Kempton RJ, Black AM, Anstead GM, Kumar AA, Blankenship DT, Freisheim JH. Lysine and ornithine analogues of methotrexate as inhibitors of dihydrofolate reductase. *J Med Chem.* 1982 Apr;25(4):475-7. PubMed PMID: 7069726.

**Inhibitor · Natural Compounds · Compound Libraries · Recombinant Proteins**

This product is for Research Use Only · Not for Human or Veterinary or Therapeutic Use

Tel:781-999-4286 E\_mail:info@targetmol.com Address:34 Washington Street,Wellesley Hills,MA 02481