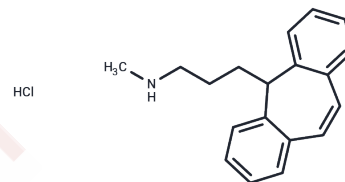


## Protriptyline hydrochloride

## Chemical Properties

CAS No. :	1225-55-4
Formula:	C <sub>19</sub> H <sub>21</sub> N·HCl
Molecular Weight:	299.84
Storage:	Store at low temperature Powder: -20°C for 3 years   In solvent: -80°C for 1 year <small>Actual storage temperature shall be subject to the COA.</small>



## Biological Description

Description	Protriptyline Hydrochloride is the hydrochloride salt form of protriptyline, a tricyclic secondary amine with an antidepressant property. Protriptyline hydrochloride (Protriptyline HCl) blocks the re-uptake of norepinephrine and serotonin by nerve terminals, thereby increasing available norepinephrine and serotonin. In addition, this agent exhibits anticholinergic activity.
Targets(IC50)	Beta Amyloid, 5-HT Receptor, Cholinesterase (ChE)

## Solubility Information

Solubility	DMSO: 150 mg/mL (500.27 mM), Sonication is recommended. ( $< 1$ mg/ml refers to the product slightly soluble or insoluble)
In vivo Formulation	10% DMSO+40% PEG300+5% Tween 80+45% Saline: 2 mg/mL (6.67 mM), Sonication is recommended. <i>Please add the solvents sequentially, clarifying the solution as much as possible before adding the next one. Dissolve by heating and/or sonication if necessary. Working solution is recommended to be prepared and used immediately. The formulation provided above is for reference purposes only. In vivo formulations may vary and should be modified based on specific experimental conditions.</i>

### Preparing Stock Solutions

---

	1mg	5mg	10mg
1 mM	3.3351 mL	16.6756 mL	33.3511 mL
5 mM	0.667 mL	3.3351 mL	6.6702 mL
10 mM	0.3335 mL	1.6676 mL	3.3351 mL
50 mM	0.0667 mL	0.3335 mL	0.667 mL

---

Please select the appropriate solvent to prepare the stock solution, according to the solubility of the product in different solvents. Please use it as soon as possible.

Note: The dilution table applies only to solid products. For liquid products, please calculate the stock solution based on the stated concentration and/or density.

#### Reference

McDougle CJ, et al. Mol Psychiatry. 1998 May;3(3):270-3.

**Inhibitor · Natural Compounds · Compound Libraries · Recombinant Proteins**

This product is for Research Use Only · Not for Human or Veterinary or Therapeutic Use

Tel:781-999-4286 E\_mail:info@targetmol.com Address:34 Washington Street,Wellesley Hills,MA 02481