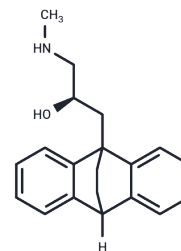


Levoprotiline

Chemical Properties

CAS No. :	76496-68-9
Formula:	C ₂₀ H ₂₃ NO
Molecular Weight:	293.4
Storage:	Powder: -20°C for 3 years In solvent: -80°C for 1 year <i>Actual storage temperature shall be subject to the COA.</i>



Biological Description

Description	Levoprotiline an antidepressant compound that is the R-(-) enantiomer of Oxaprotiline, acts comparably to Oxaprotiline and has a shorter latency to onset of action. It is the successor to the second-generation antidepressant maprotiline.
Targets(IC50)	Others, Adrenergic Receptor

Preparing Stock Solutions

	1mg	5mg	10mg
1 mM	3.4083 mL	17.0416 mL	34.0832 mL
5 mM	0.6817 mL	3.4083 mL	6.8166 mL
10 mM	0.3408 mL	1.7042 mL	3.4083 mL
50 mM	0.0682 mL	0.3408 mL	0.6817 mL

Please select the appropriate solvent to prepare the stock solution, according to the solubility of the product in different solvents. Please use it as soon as possible.

Note: The dilution table applies only to solid products. For liquid products, please calculate the stock solution based on the stated concentration and/or density.

Reference

Kaiser G, Ackermann R, Dieterle W, Reimann IW, Bieck PR. Pharmacokinetics of the antidepressant levoprotiline after intravenous and peroral administration in healthy volunteers. *Biopharm Drug Dispos.* 1992 Mar;13(2):83-93. PubMed PMID: 1550911.

Náhunek K, Svestka J, Cesková E, Rysánek R, Obrovská V, Misurec J, Wendt G. Position of levoprotiline in the treatment of acute endogenous depression. *Act Nerv Super (Praha).* 1989 Dec;31(4):280-1. PubMed PMID: 2638110.

Ackermann R, Kaiser G, Schueller F, Dieterle W. Determination of the antidepressant levoprotiline and its N-desmethyl metabolite in biological fluids by gas chromatography/mass spectrometry. *Biol Mass Spectrom.* 1991 Nov;20(11):709-16. PubMed PMID: 1799582.

Höschl C, Filip V, Bornová L, David I, Karen P, Seifertová D. [Results of a clinical trial of levoprotiline]. *Cesk Psychiatr.* 1992 Jun;88(2):97-105. Czech. PubMed PMID: 1505054.

Inhibitor · Natural Compounds · Compound Libraries · Recombinant Proteins

This product is for Research Use Only · Not for Human or Veterinary or Therapeutic Use

Tel:781-999-4286 E_mail:info@targetmol.com Address:34 Washington Street,Wellesley Hills,MA 02481